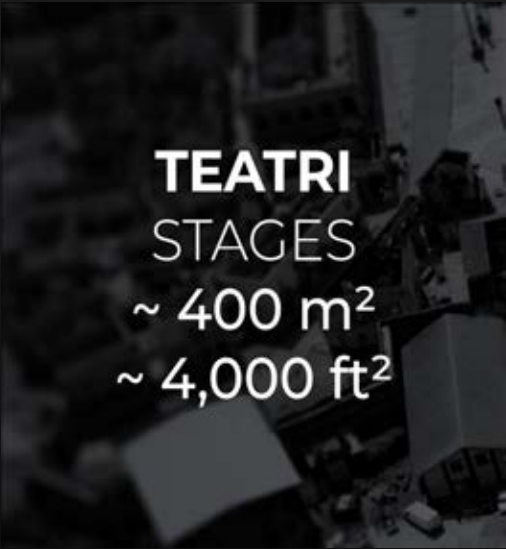




CINECITTÀ

HISTORY DRIVING INNOVATION



TEATRI
STAGES
~ 400 m²
~ 4,000 ft²



TEATRI
STAGES
~ 800 m²
~ 8,000 ft²



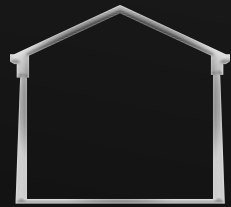
TEATRI
STAGES
+ 1000 m²
+10,000 ft²



TEATRI
STAGES
+ 2000 m²
+20,000 ft²



BACKLOT



STUDIOS

Studio Lot Map

TEATRI/STAGES

Teatri/Stages ~ 400 m² / ~ 4,000 ft²

Teatri/Stages ~ 800 m² / ~ 8,000 ft²

Teatri/Stages + 1000 m² / +10,000 ft²

Teatri/Stages + 2000 m² / +20,000 ft²

Lumina

BACKLOT

Ancient Rome

Roman Theater

Urban American District

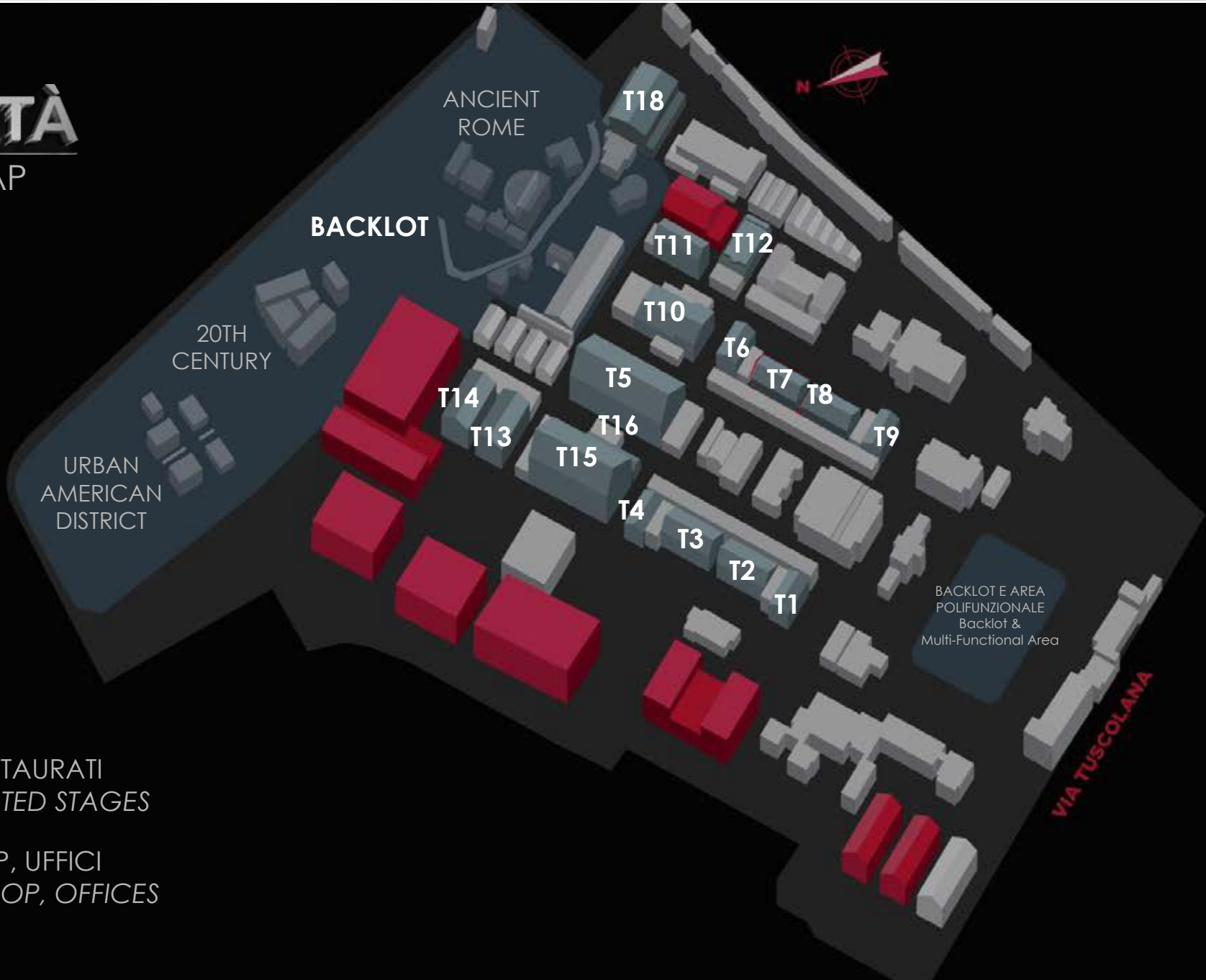
20th Century

An aerial, black and white photograph of a university campus. The image shows a dense cluster of buildings, many with gabled roofs, interspersed with numerous trees. In the foreground, a large, light-colored building with a central entrance is visible, with a road and parking lot in front of it. The text "STUDIO LOT MAP" is overlaid in large, white, sans-serif capital letters across the center of the image.

STUDIO LOT MAP

CINECITTÀ

STUDIO LOT MAP



 **TEATRI NUOVI E RESTAURATI**
NEW AND RENOVATED STAGES

 **SERVIZI, WORKSHOP, UFFICI**
SERVICES, WORKSHOP, OFFICES

An aerial, high-angle photograph of a large industrial or studio complex. The image is in grayscale. The complex consists of numerous large, rectangular buildings with flat or low-pitched roofs, arranged in a somewhat grid-like pattern. There are several courtyards and parking areas interspersed between the buildings. The surrounding area appears to be a mix of industrial and residential structures. The word "STAGES" is overlaid in the center of the image in large, white, serif capital letters.

STAGES



TEATRI/STAGES

~ 400 m² / ~ 4,000 ft²

CINECITTÀ



TEATRO
STAGE

1





TEATRO STAGE

1

Area 447,75 m² | 4,819 ft²

H 9,95 m | 32.64 ft

Botole/Trapdoors

Insonorizzazione/Soundproofing

Climatizzazione/HVAC

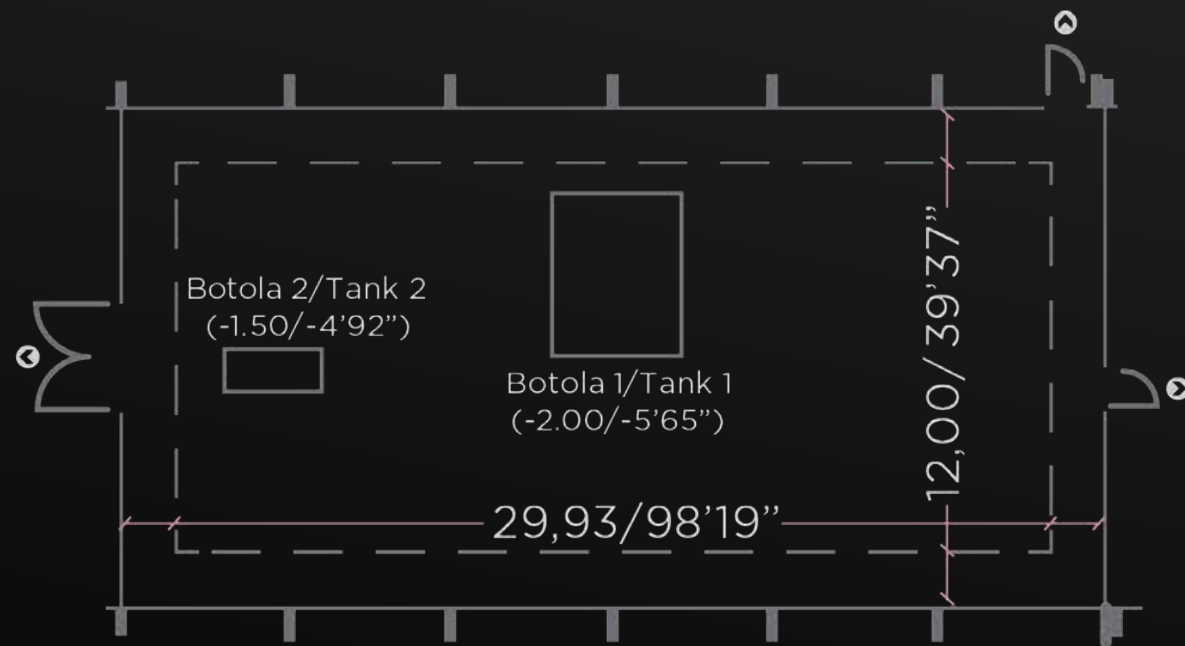
Corrente/Electricity

Antincendio/Fire System

Connessione/WiFi-Lan Connection

Pubblico (CPI)/Bystanders

EXTRA 1 VIP Dressing room, 3 Dressing rooms with bathroom, 6 Standard offices, 1 Open space
1 Medium workshop, 1 Large workshop



DOWNLOAD PDF



THE EQUALIZER 3
Antoine Fuqua
Denzel Washington Dakota Fanning Remo Girone



TEATRO
STAGE

4





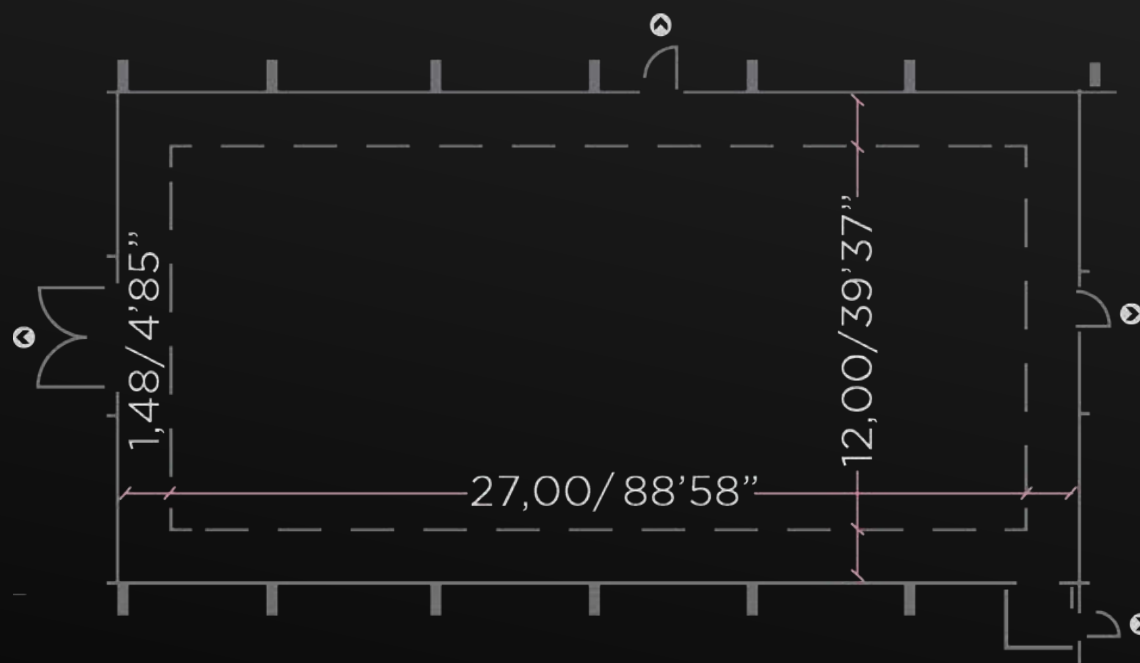
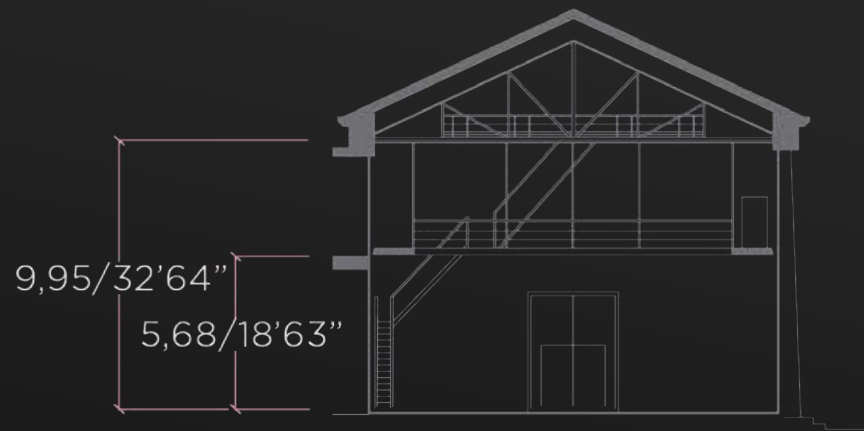
TEATRO STAGE

4

Area 448,20 m² | 4,824 ft²
H 9,95 m | 32.64 ft

-))) Insonorizzazione/Soundproofing
- ❄️ Climatizzazione/HVAC
- ⚡ Corrente/Electricity
- 🚒 Antincendio/Fire System
- 📶 Connessione/WiFi-Lan Connection
- 👤 Pubblico (CPI)/Bystanders

EXTRA 2 VIP dressing rooms, 2 Dressing rooms with bathroom, 4 Standard offices, 1 Open space
1 Small workshop, 1 Medium workshop



[DOWNLOAD PDF](#)

DIRETTORE

M. IL FIGLIO DEL SECOLO

Joe Wright

Luca Marinelli Diana Manea Francesca Osso Antonio Perretta Tommaso Cardarelli Tommaso Ragno



M. IL FIGLIO DEL SECOLO

Joe Wright

Luca Marinelli Diana Monea Francesca Osso Antonio Perretta Tommaso Cardarelli Tommaso Ragno



TEATRO
STAGE

6





TEATRO STAGE

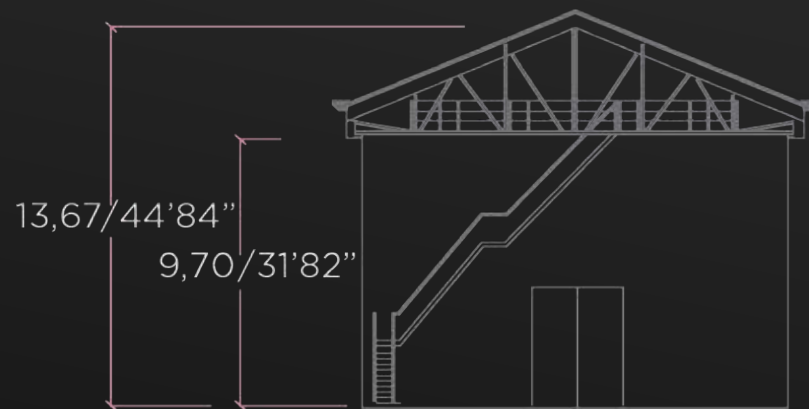
6

Area 448,05 m² | 4,822 ft²
H 9,70 m | 31.82 ft

-))) Insonorizzazione/Soundproofing
- ❄️ Climatizzazione/HVAC
- ⚡ Corrente/Electricity
- 🔔 Antincendio/Fire System
- 📶 Connessione/WiFi-Lan Connection
- 👤 Pubblico (CPI)/Bystanders

EXTRA

4 Dressing rooms with bathroom, 8 Standard offices, 1 Open space
1 Small workshop, 2 Medium workshops, 2 Large workshops



DOWNLOAD PDF



IL SOL DELL'AVVENIRE

Nanni Moretti

Mathieu Amalric Barбора Bobulova Nanni Moretti Margherita Buy Silvio Orlando



BOOK CLUB 2: THE NEXT CHAPTER

Bill Holderman

Diane Keaton Jane Fonda Candice Bergen Mary Steenburgen Andy Garcia Giancarlo Giannini



IL RE
Giuseppe Gagliardi
Luca Zingaretti Isabella Ragonese Paolo D Bovani



TEATRO
STAGE

9



TEATRO STAGE

9

Area 448,05 m² | 4,822 ft²

H 9,70 m | 31.82 ft

Botola/Trapdoor

Insonorizzazione/Soundproofing

Climatizzazione/HVAC

Corrente/Electricity

Antincendio/Fire System

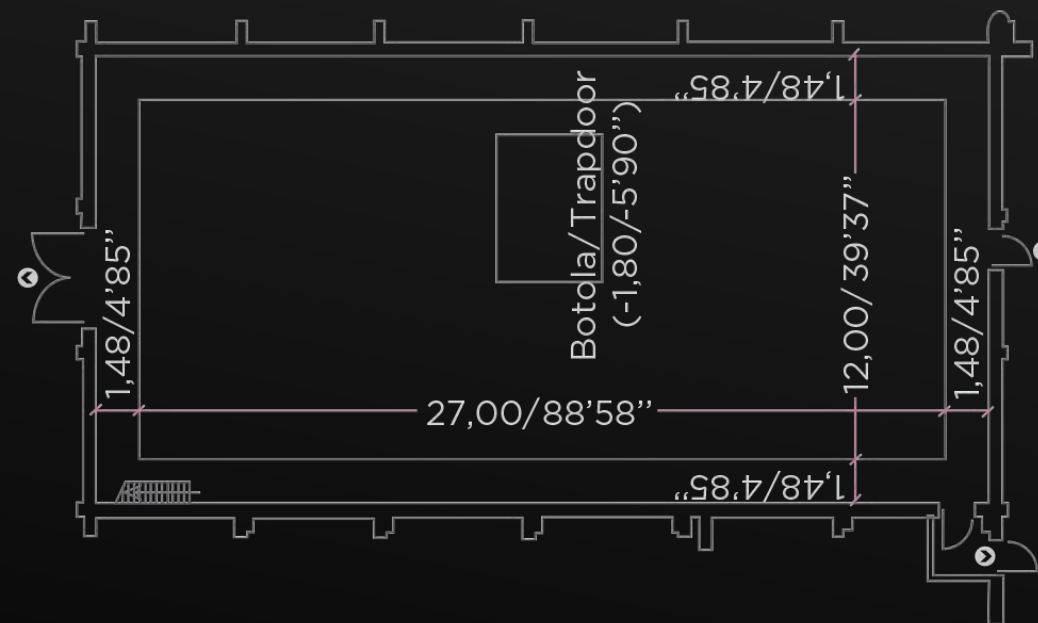
Connessione/WiFi-Lan Connection

Pubblico (CPI)/Bystanders

EXTRA

4 Dressing rooms with bathroom, 7 Standard offices, 1 Open space

1 Medium workshop, 1 Large workshop



DOWNLOAD PDF



TEATRO
STAGE

11



TEATRO STAGE

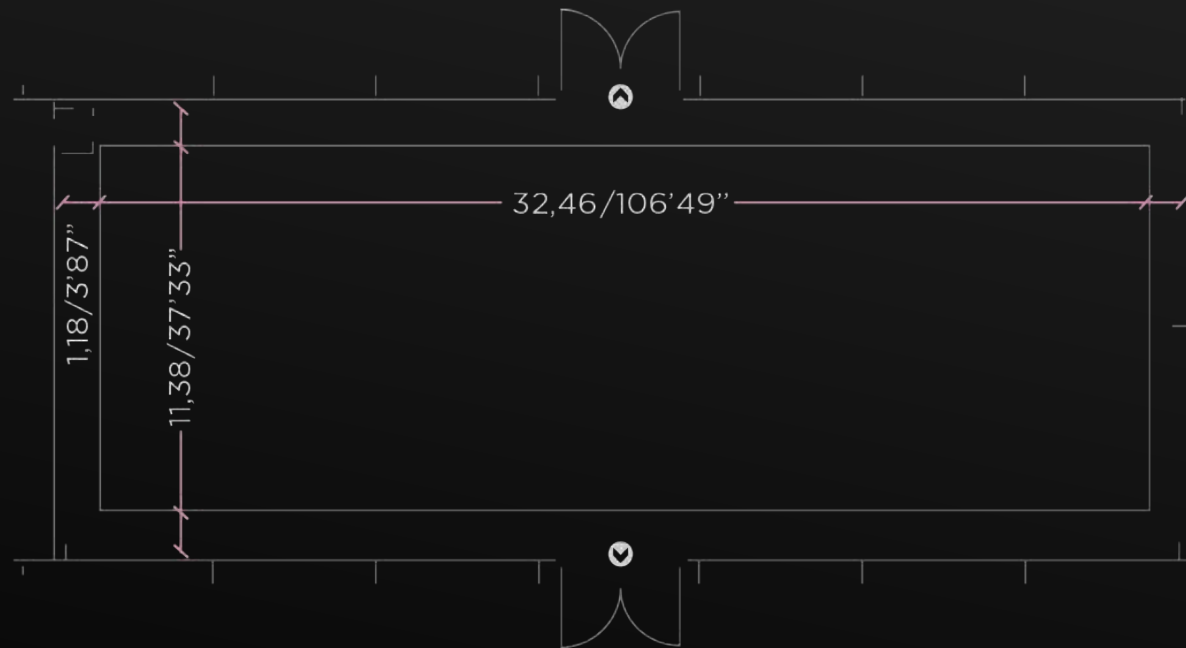
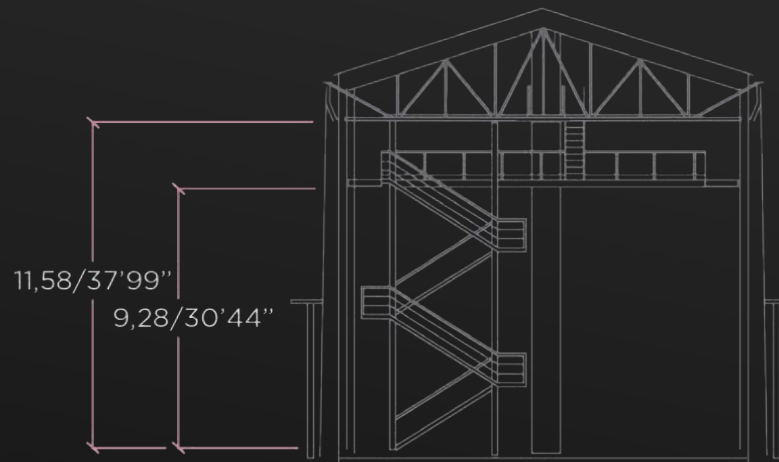
11

Area 478,42 m² | 5,149 ft²
H 11,58 m | 37.99 ft

-))) Insonorizzazione/Soundproofing
- ❄️ Climatizzazione/HVAC
- ⚡ Corrente/Electricity
- 🔔 Antincendio/Fire System
- 📶 Connessione/WiFi-Lan Connection
- 👤 Pubblico (CPI)/Bystanders

EXTRA

6 Standard offices, 1 Makeup room
1 Medium workshop



DOWNLOAD PDF



RIPLEY
Steven Zaillian
Andrew Scott Dakota Fanning Johnny Flynn



RIPLEY
Steven Zaillian
Andrew Scott Dakota Fanning Johnny Flynn



**TEATRO
STAGE**

16





TEATRO STAGE

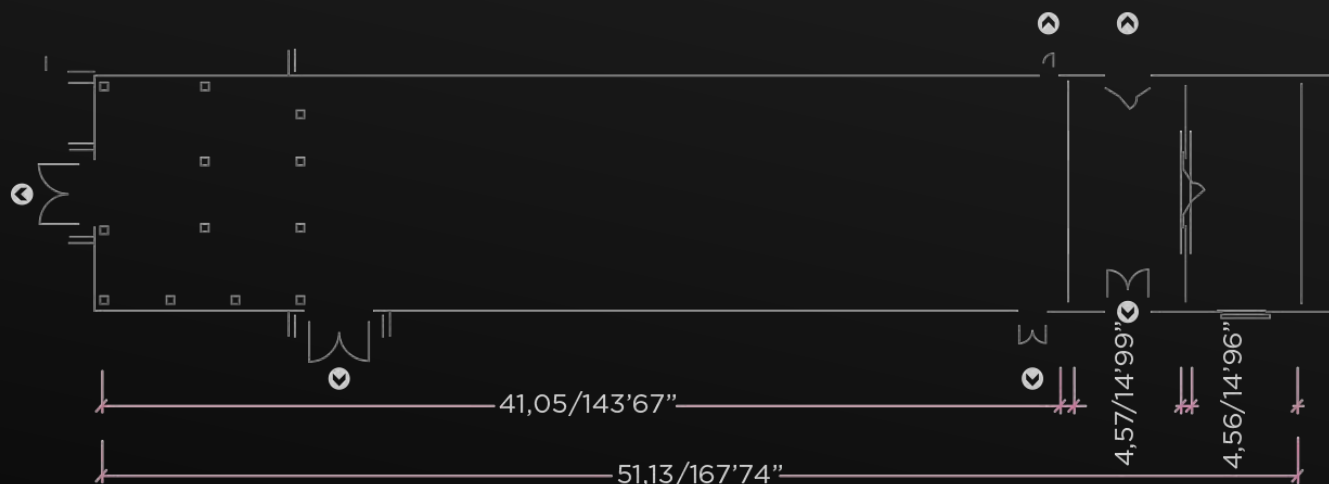
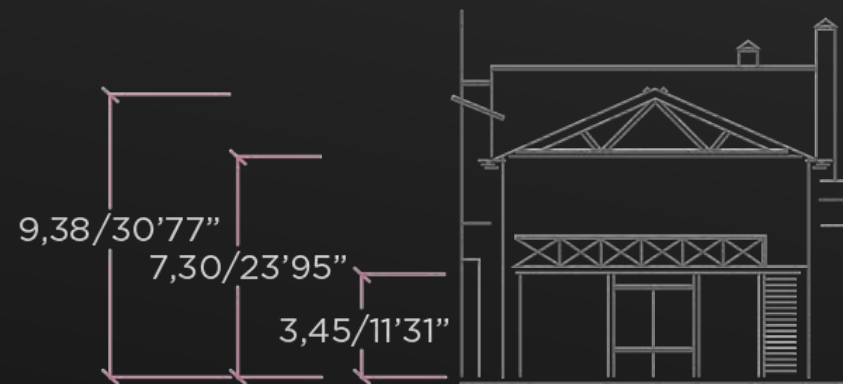
16

Area 478,42 m² | 5,149 ft²
H 11,58 m | 37.99 ft

-))) Insonorizzazione/Soundproofing
- ❄️ Climatizzazione/HVAC
- ⚡ Corrente/Electricity
- 🚒 Antincendio/Fire System
- 📶 Connessione/WiFi-Lan Connection
- 👤 Pubblico (CPI)/Bystanders

EXTRA

6 Standard offices, 1 Makeup room
1 Medium workshop



DOWNLOAD PDF



M
A
P

STUDIOS



16



TEATRI/STAGES

~ 800 m² / ~ 8,000 ft²

CINECITTÀ



TEATRO
STAGE

2





TEATRO STAGE

2

Area 799,20 m² | 8,602 ft²

H 9,97 m | 32.70 ft

Botole/Trapdoors

Insonorizzazione/Soundproofing

Climatizzazione/HVAC

Corrente/Electricity

Antincendio/Fire System

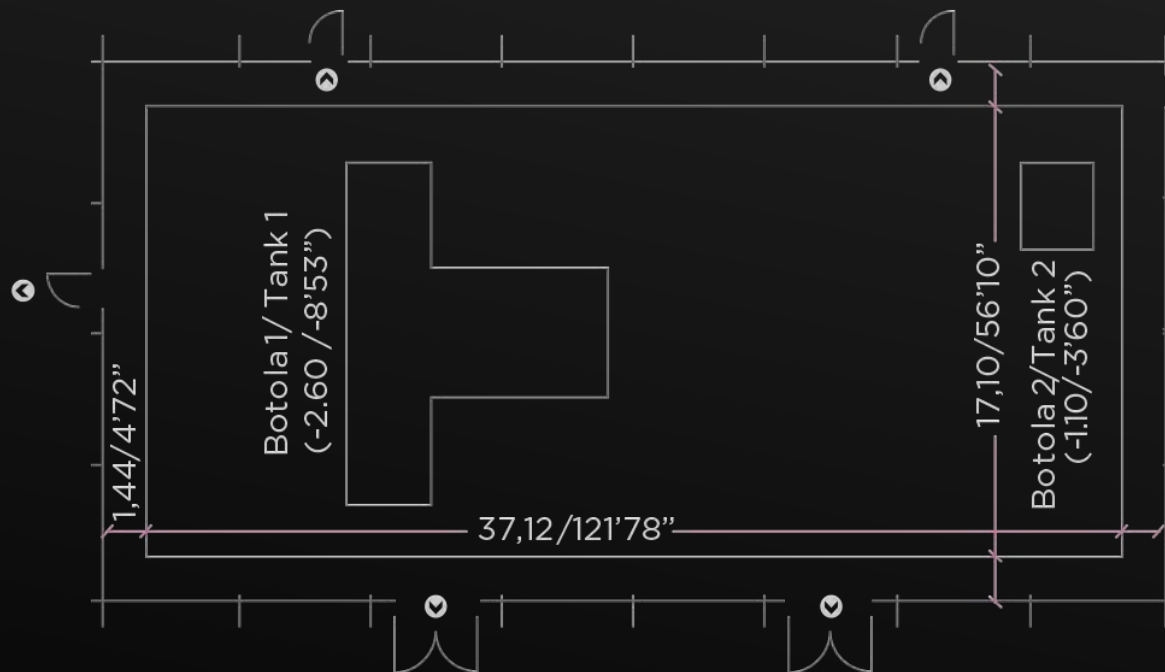
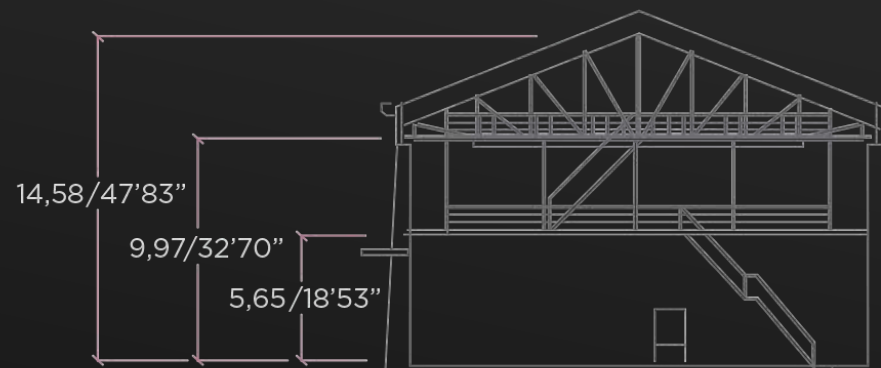
Connessione/WiFi-Lan Connection

Pubblico (CPI)/Bystanders

EXTRA

17 Standard offices, 2 Makeup rooms

1 Small workshop, 1 Medium workshop, 2 Large workshops



DOWNLOAD PDF



THE OLD GUARD 2
Victoria Mahoney
Charlize Theron Uma Thurman



TEATRO
STAGE

3



TEATRO STAGE

3

Area 798,40 m² | 8,593 ft²

H 9,80 m | 32.15 ft

Botola/Trapdoor

Insonorizzazione/Soundproofing

Climatizzazione/HVAC

Corrente/Electricity

Antincendio/Fire System

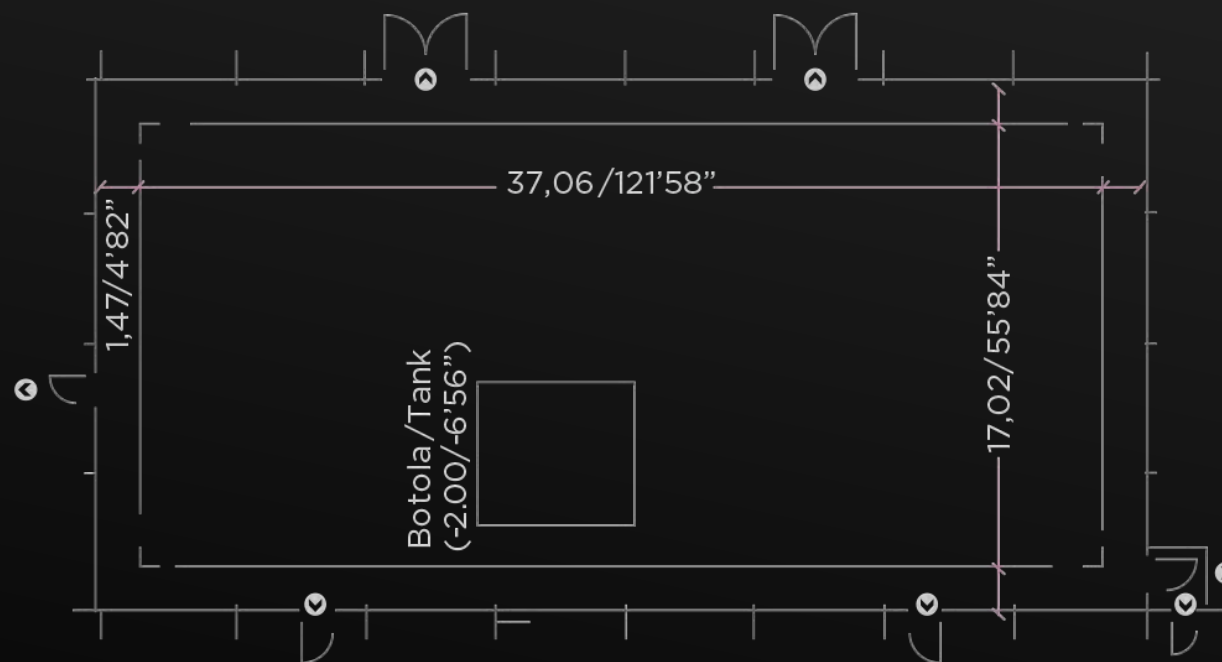
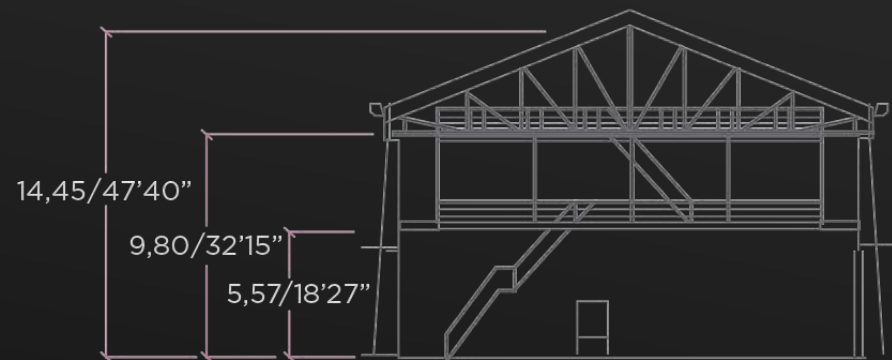
Connessione/WiFi-Lan Connection

Pubblico (CPI)/Bystanders

EXTRA

2 Dressing rooms with bathroom, 12 Standard offices, 2 Makeup rooms

1 Small workshop, 1 Medium workshop, 2 Large workshops



DOWNLOAD PDF



RIPLEY
Steven Zaillian
Andrew Scott Dakota Fanning Johnny Flynn



TEATRO
STAGE

8



TEATRO STAGE

8

Area 794,00 m² | 8,546 ft²

H 9,90 m | 32.48 ft

Botole/Trapdoors

Insonorizzazione/Soundproofing

Climatizzazione/HVAC

Corrente/Electricity

Antincendio/Fire System

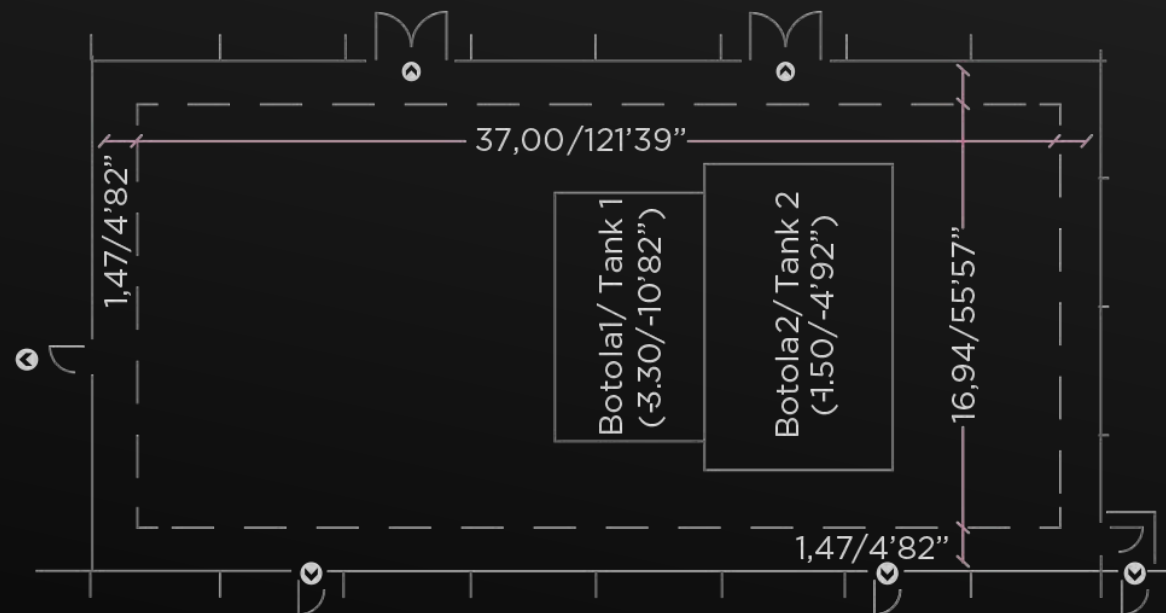
Connessione/WiFi-Lan Connection

Pubblico (CPI)/Bystanders

EXTRA

2 Dressing rooms with bathroom, 14 Standard offices, 2 Makeup rooms

1 Small workshop, 2 Large workshops



DOWNLOAD PDF



IL SOL DELL'AVVENIRE

Nanni Moretti

Mathieu Amalric Barbora Bobulova Nanni Moretti Margherita Buy Silvio Orlando



TEATRO
STAGE

12



TEATRO STAGE

12



Area 938,89 m² | 10,106 ft²

H 8,60 m | 28.21 ft



Botole/Trapdoors



Insonorizzazione/Soundproofing



Climatizzazione/HVAC



Corrente/Electricity



Antincendio/Fire System



Connessione/WiFi-Lan Connection



Pubblico (CPI)/Bystanders

EXTRA

4 Dressing rooms with bathroom, 1 Makeup room

1 Small workshop



[LINK](#)



FINALMENTE L'ALBA

Saverio Costanzo

Lily James Rebecca Antonaci Joe Keery Rachel Sennott Alba Rohrwacher Willem Dafoe



TEATRO
STAGE

13



TEATRO STAGE

13



Area 788,04 m² | 8,482 ft²

H 13,30 m | 43.63 ft



Botole/Trapdoors



Insonorizzazione/Soundproofing



Climatizzazione/HVAC



Corrente/Electricity



Antincendio/Fire System



Connessione/WiFi-Lan Connection

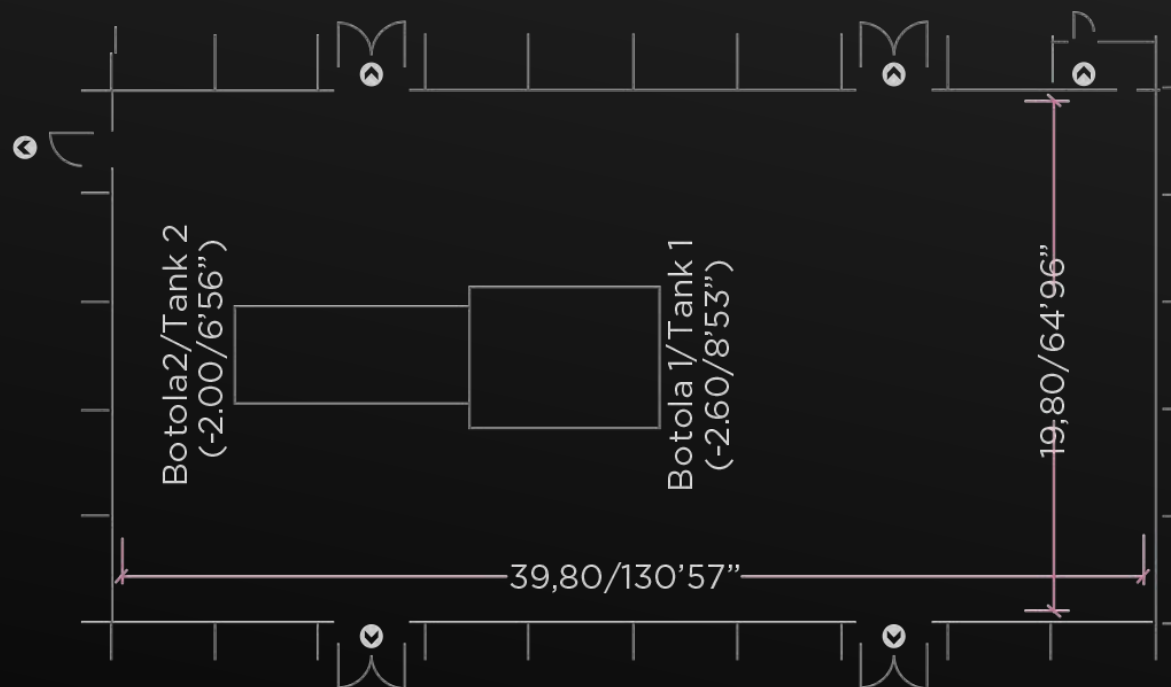


Pubblico (CPI)/Bystanders

EXTRA

10 Dressing rooms with bathroom, 40 Large offices, 3 Makeup rooms

3 Small workshops, 4 Medium workshops



DOWNLOAD PDF



FINALMENTE L'ALBA

Saverio Costanzo

Lily James Rebecca Antonaci Joe Keery Rachel Sennott Alba Rohrwacher Willem Dafoe



C'E' ANCORA DOMANI
Paola Cortellesi
Paola Cortellesi Valerio Mastandrea Romana Maggiora Vergano



C'E' ANCORA DOMANI
Paola Cortellesi
Paola Cortellesi Valerio Mastandrea Romana Maggiora Vergano

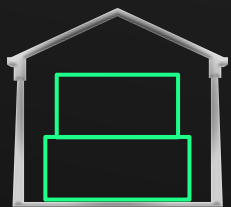


TEATRO STAGE

14

smart set "ready to use"





TEATRO STAGE

14

Area 789,03 m² | 8,493 ft²

H 13,33 m | 43.73 ft

Botole/Trapdoors

Insonorizzazione/Soundproofing

Climatizzazione/HVAC

Corrente/Electricity

Antincendio/Fire System

Connessione/WiFi-Lan Connection

Pubblico (CPI)/Bystanders

EXTRA

10 Dressing rooms with bathroom, 40 Large offices, 3 Makeup rooms

3 Small workshops, 4 Medium workshops

RESIDENTIAL STAGE



MODERNO
MODERN



MODERNO
TRADITIONAL



CARCERE
PRISON



OSPEDALE
HOSPITAL



ANDRONE
ENTRANCE HALL



CORTILE
COURTYARD



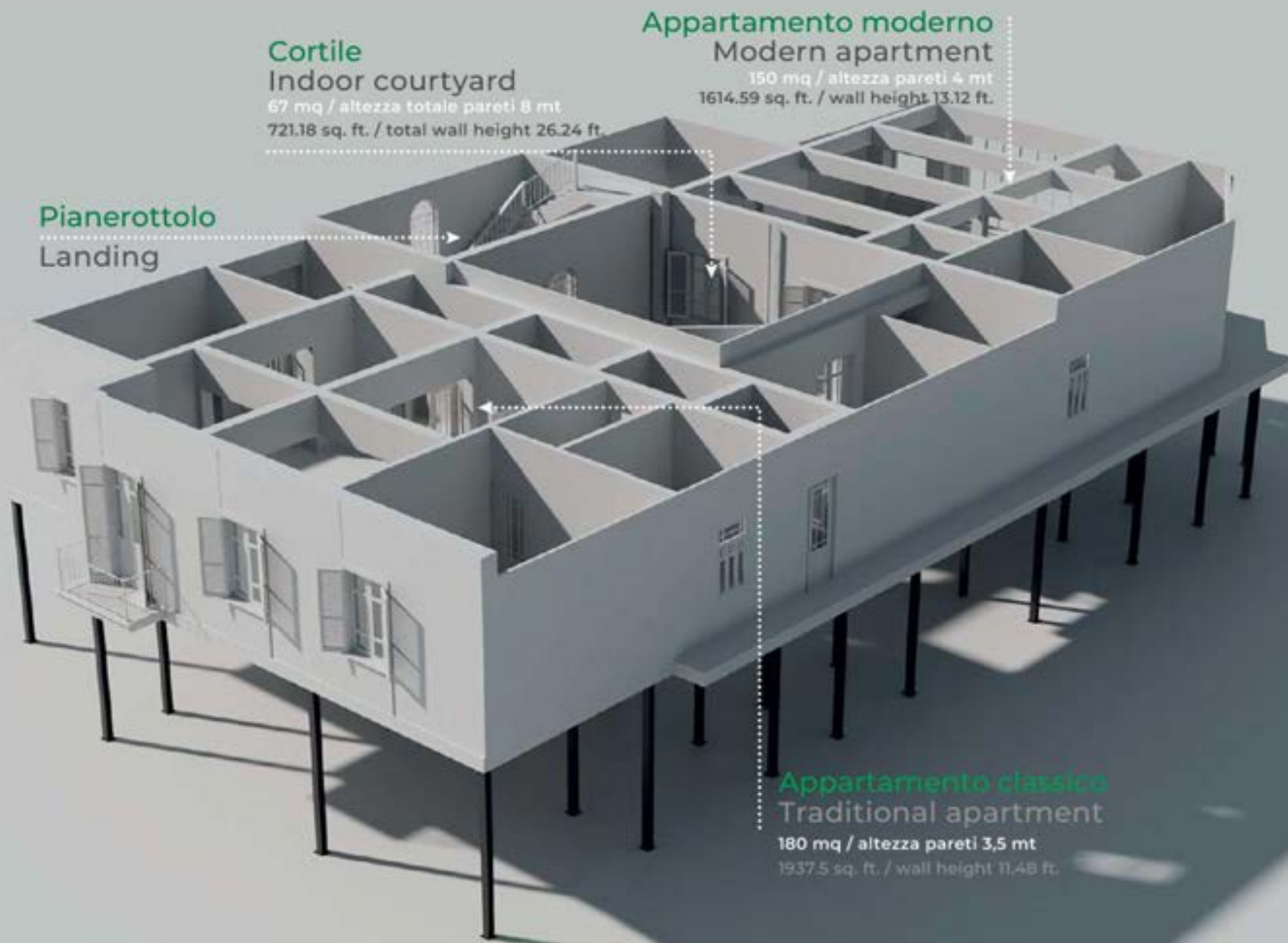
A MULTIFUNCTIONAL AND MODULAR PRET-A-PORTER SET

Designed to satisfy boundless needs in limited times and costs. Five sets in one: an apartment building, a hospital, a prison, as well as indoor and outdoor urban commodity spaces – a guarantee of economic, productive, logistical, operational, and eco-sustainable efficiency.

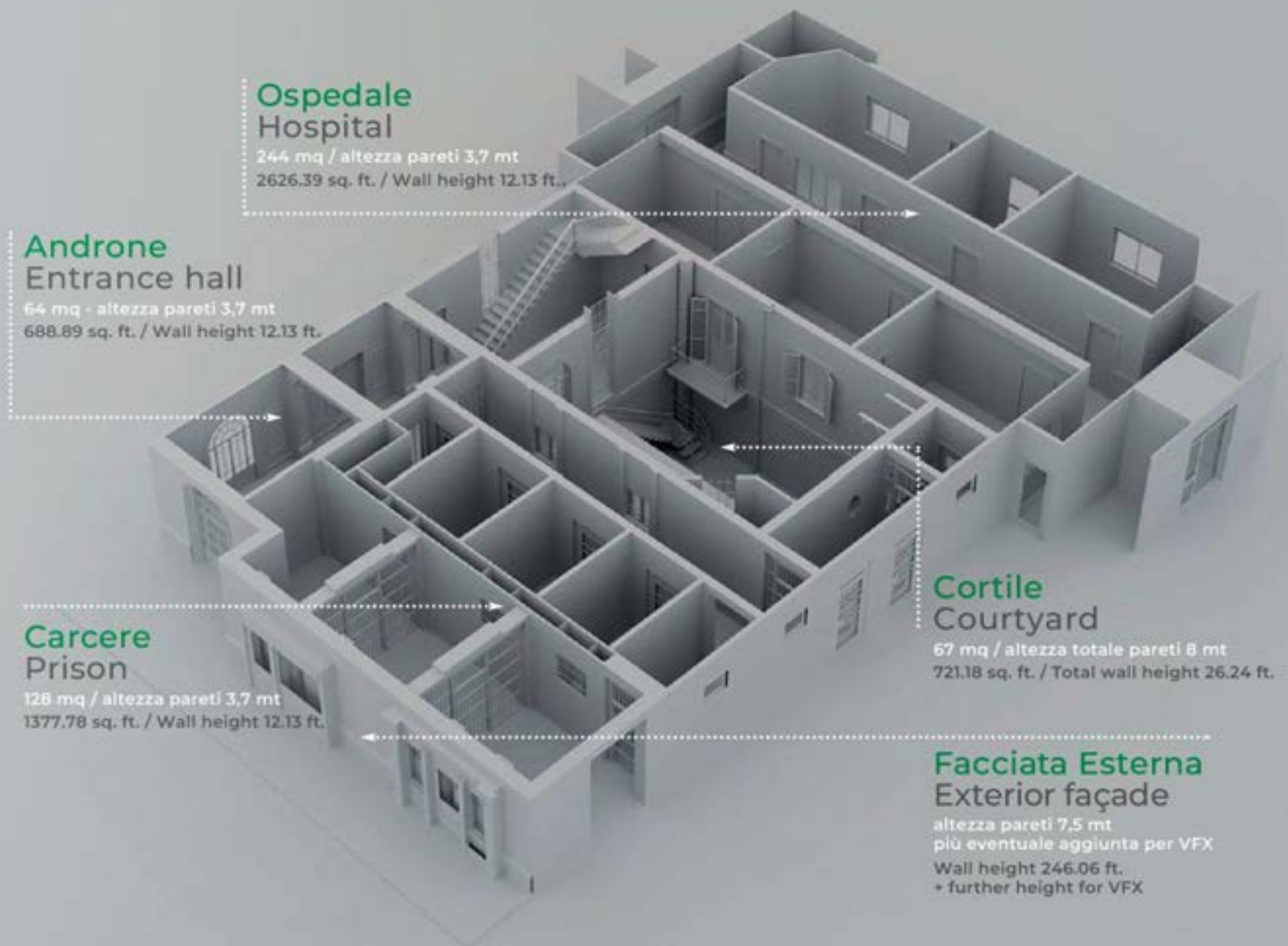
SMART SET “READY TO USE” E MODIFICABILI

Un set pret-a-porter, plasmabile per infinite esigenze in tempi e costi contenuti. Cinque set in uno: un condominio, un ospedale e un carcere, oltre a spazi di commodity urbani interni ed esterni. Per un'efficienza economica, produttiva, multifunzionale e modulare, logistica, lavorativa ed ecosostenibile.

PIANO SUPERIORE UPPER FLOOR



PIANO INFERIORE LOWER FLOOR



Ospedale Hospital

244 mq / altezza pareti 3,7 mt
2626.39 sq. ft. / Wall height 12.13 ft.

Androne Entrance hall

64 mq - altezza pareti 3,7 mt
688.89 sq. ft. / Wall height 12.13 ft.

Carcere Prison

128 mq / altezza pareti 3,7 mt
1377.78 sq. ft. / Wall height 12.13 ft.

Cortile Courtyard

67 mq / altezza totale pareti 8 mt
721.18 sq. ft. / Total wall height 26.24 ft.

Facciata Esterna Exterior façade

altezza pareti 7,5 mt
più eventuale aggiunta per VFX
Wall height 246.06 ft.
+ further height for VFX



DOMINA 2
David Evans Sallie Aprahamian
Kasia Smutniak Matthew McNulty Claire Forlani Christine Bottomley Ben Batt



TEATRI/STAGES

+ 1000 m² / +10,000 ft²

CINECITTÀ



**TEATRO
STAGE**

10



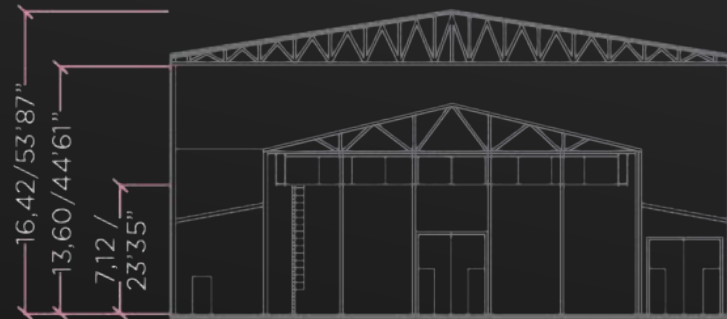
TEATRO STAGE

10

Corpo aggiunto/Second Structure

Area 391,62 m2 | 4,215 ft2

H 9,77 m | 32.05 ft



Area 1.424,11 m² | 15,328 ft²

H 13,60 m | 44.61 ft



Botole/Trapdoors



Insonorizzazione/Soundproofing



Climatizzazione/HVAC



Corrente/Electricity



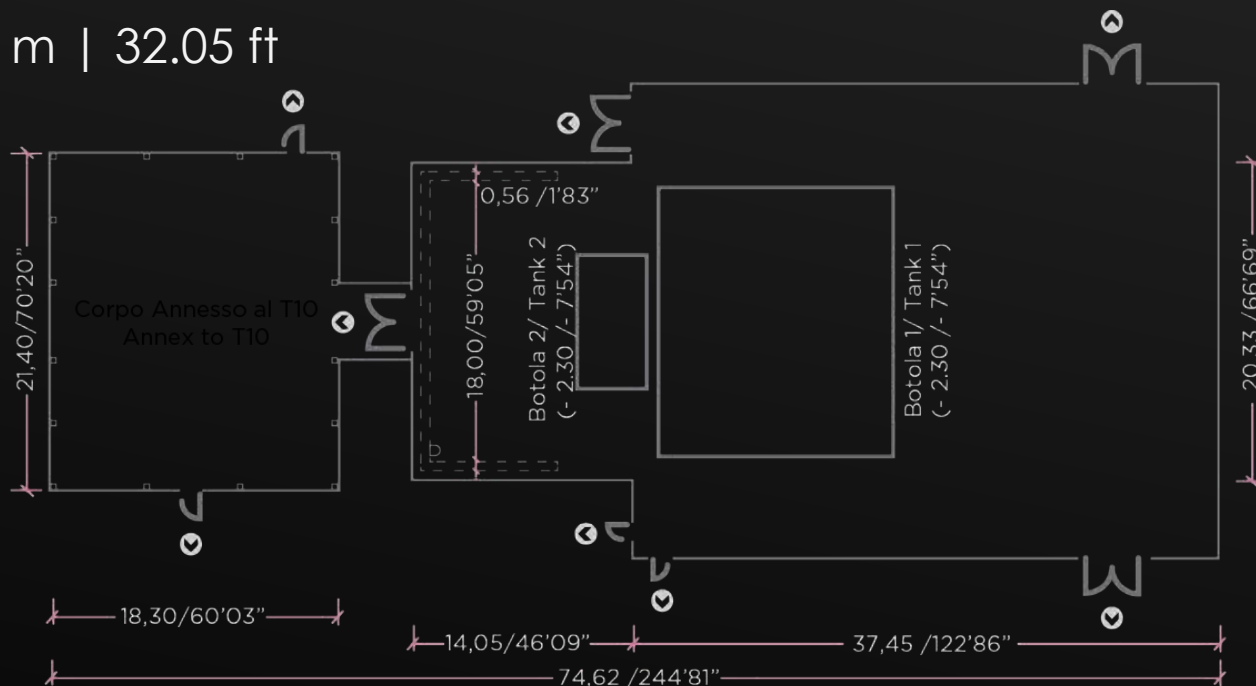
Antincendio/Fire System



Connessione/WiFi-Lan Connection



Pubblico (CPI)/Bystanders

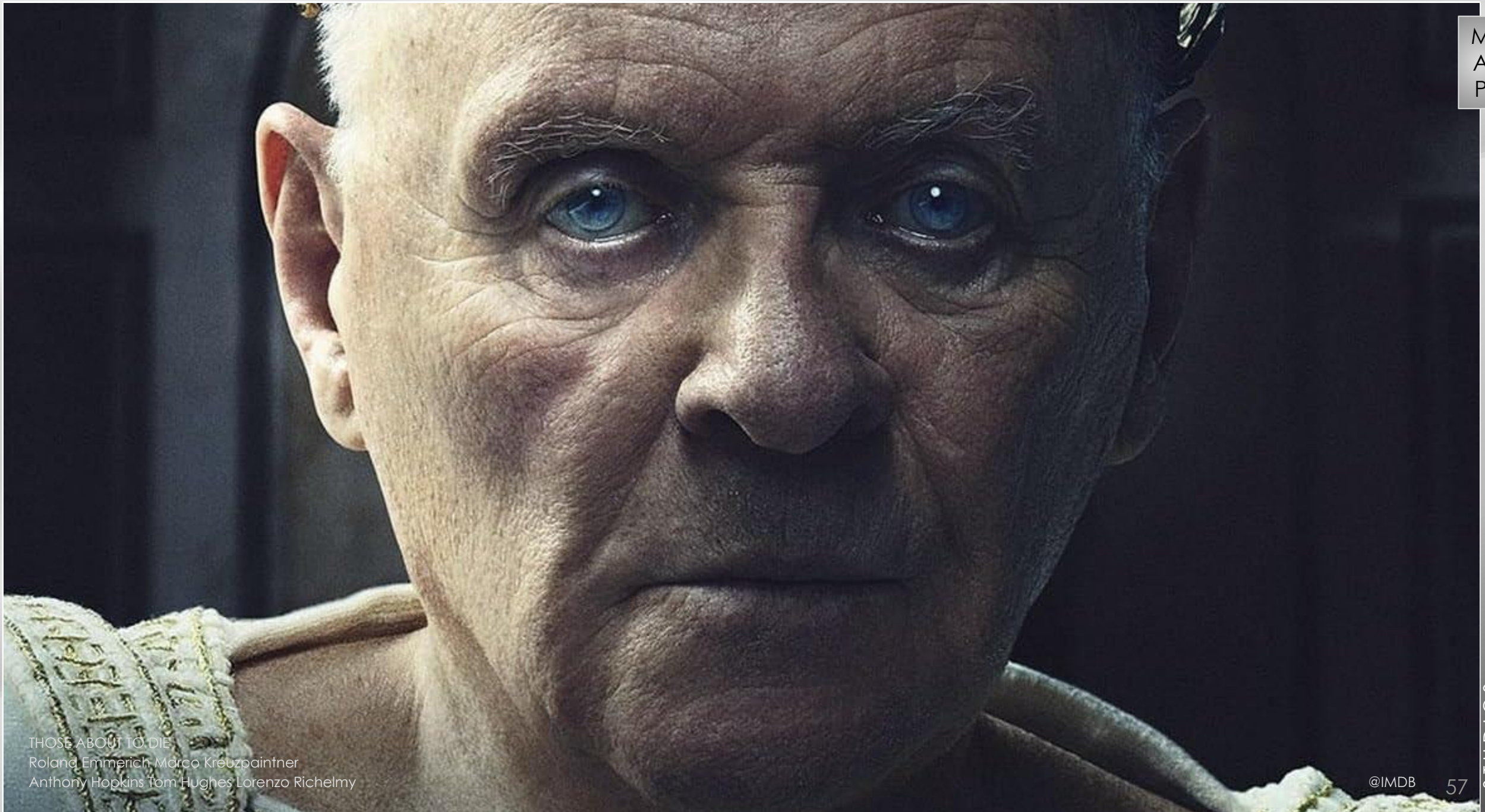


EXTRA

1 Dressing room with bathroom, 7 Standard offices/Dressing rooms

2 Medium workshops, 1 Small workshop

DOWNLOAD PDF



THOSE ABOUT TO DIE
Roland Emmerich Marco Kreuzpaintner
Anthony Hopkins Tom Hughes Lorenzo Richelmy



THOSE ABOUT TO DIE
Roland Emmerich Marco Kreuzpaintner
Anthony Hopkins Tom Hughes Lorenzo Richelmy



TEATRO
STAGE

15



TEATRO STAGE

15



Area 1.611,31 m² | 17,343 ft²

H 13,75 m | 45.11 ft



Botole/Trapdoors



Insonorizzazione/Soundproofing



Climatizzazione/HVAC



Corrente/Electricity



Antincendio/Fire System



Connessione/WiFi-Lan Connection



Pubblico (CPI)/Bystanders

EXTRA

8 Dressing rooms with bathroom, 9 Standard offices, 2 Makeup rooms

2 Small workshops, 3 Medium workshops, 1 Large workshop

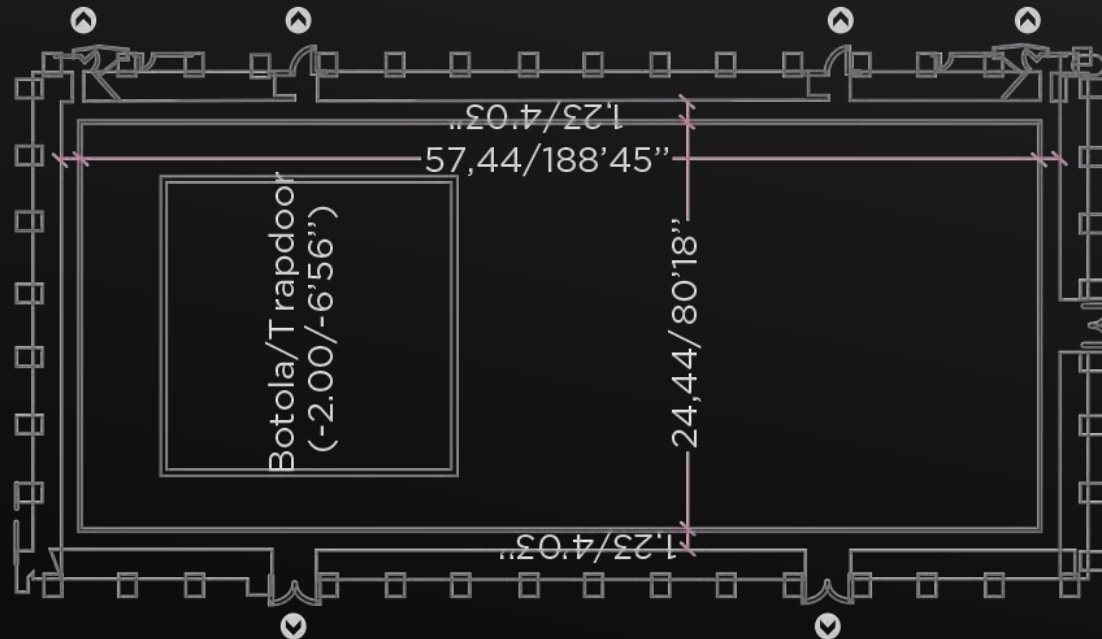
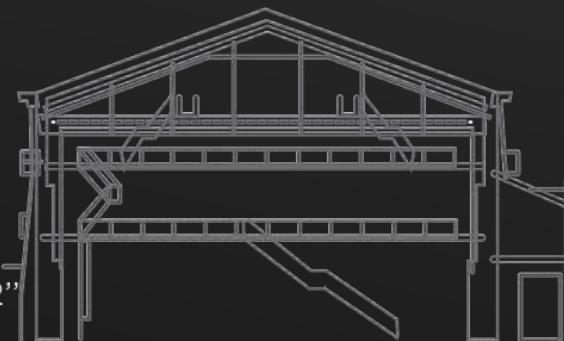
18,25/59'87"

13,75/45'11"

13,30/43'63"

11,10/36'41"

6,50/21'32"



DOWNLOAD PDF



CONCLAVE
Edward Berger
Ralph Fiennes Stanley Tucci John Lithgow Isabella Rossellini



**TEATRO
STAGE**

18

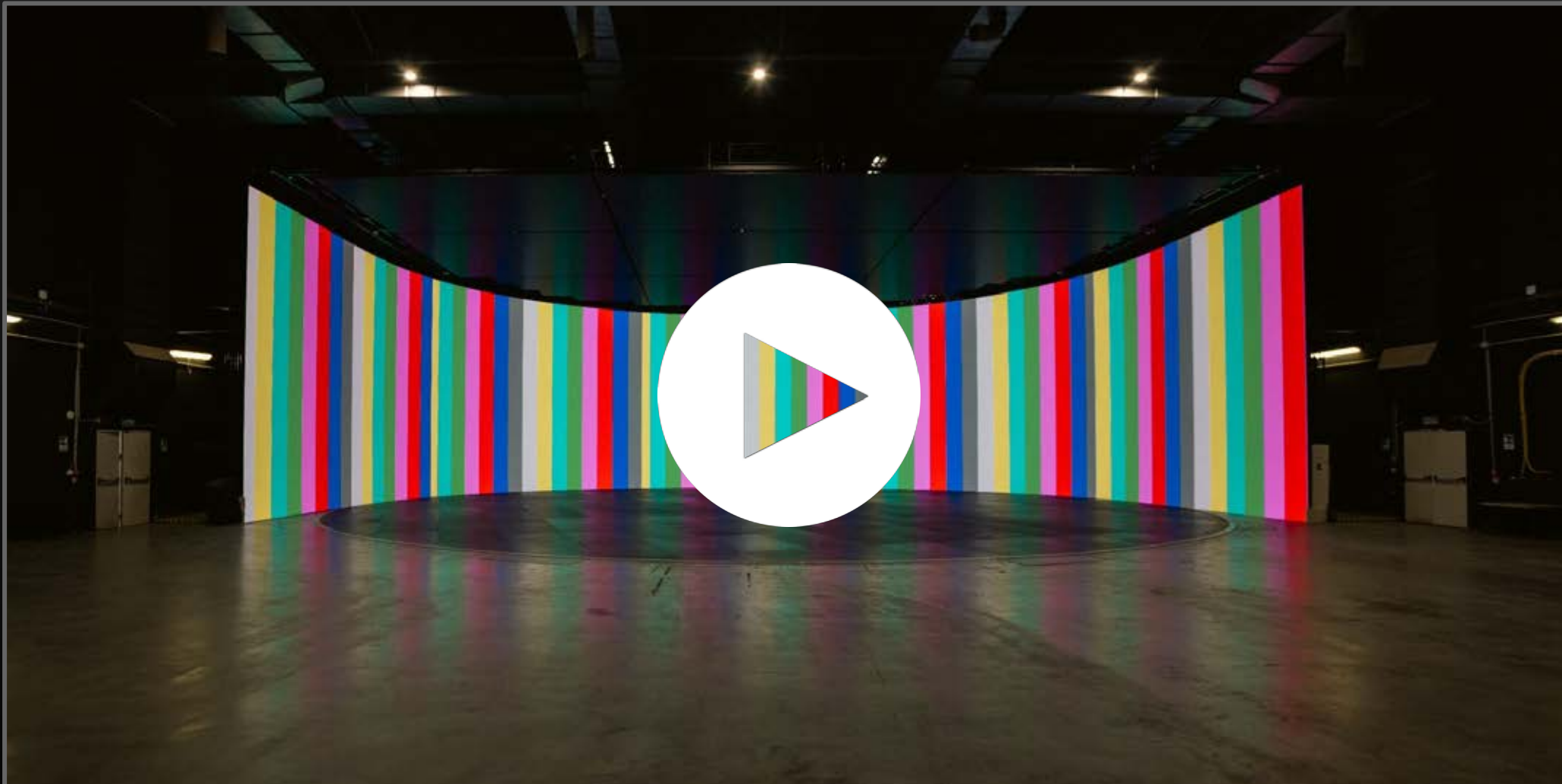
**VIRTUAL
PRODUCTION**



DNEG DICEMBRE T18 - VIDEO - 45S



T18 BUILDING AND OPENING - VIDEO







VOLUME STAGE

18

 Area 1.494 m² | 16,082 ft²

 H 9,90 m | 32.5 ft

 Botole/Trapdoors

 Insonorizzazione/Soundproofing

 Climatizzazione/HVAC

 Corrente/Electricity

 Antincendio/Fire System

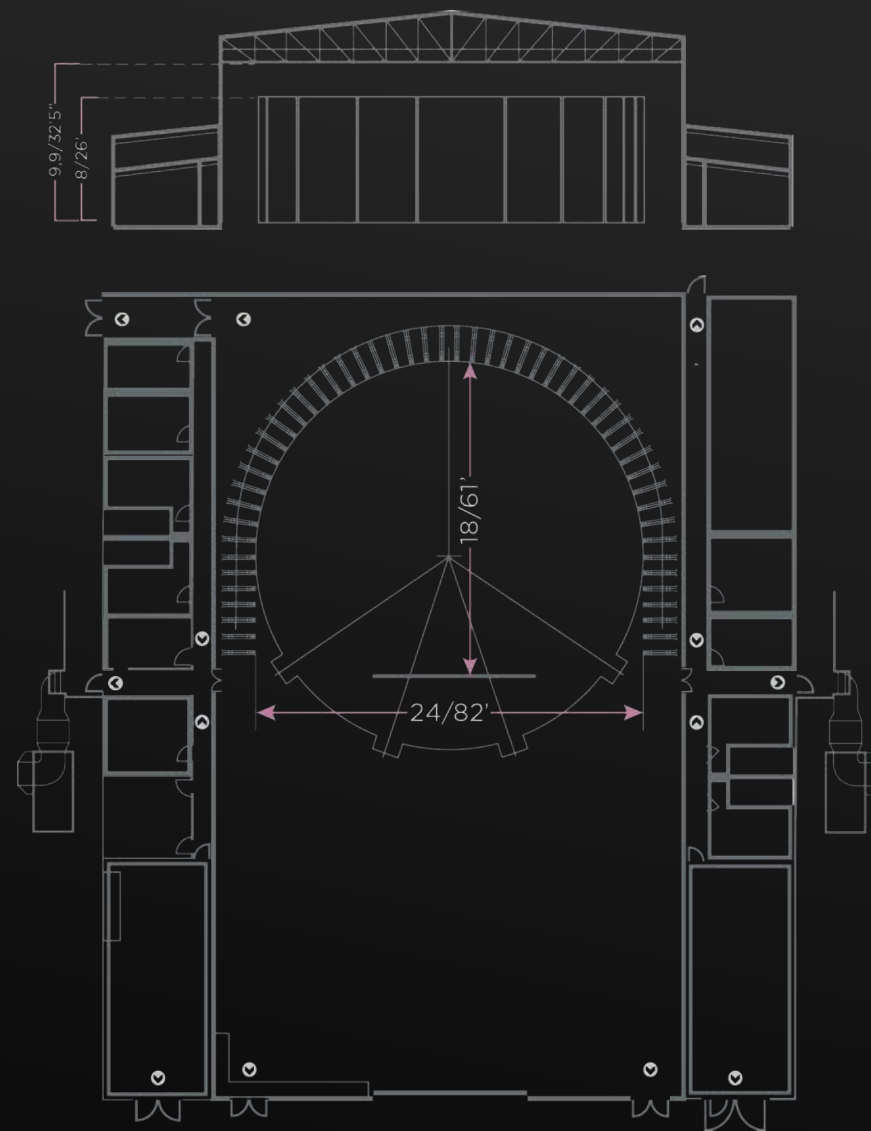
 Connessione/WiFi-Lan Connection

 Pubblico (CPI)/Bystanders

EXTRA

6 Large offices, 4 Dressing rooms with bathroom, 1 Makeup room, 1 Shower room

2 Large workshops



DOWNLOAD PDF

452mq

Il Led Volume Stage tra i più grandi d'Europa

4,865.29 sq. ft.

One of the largest LED walls in Europe

Il T18 Led Volume Stage è uno studio di ultima generazione, che permette di girare un film in un set virtuale e dinamico.

Il LED Volume è stato costruito da Faber Audiovisuals, utilizzando pannelli ROE BP2V2 (passo 2,8mm) per le pareti e pannelli ROE CB5 per il tetto motorizzato (passo 5,77 mm). Il LED Volume è inoltre dotato di una piattaforma girevole a **360°**, dal **diametro di 25 metri**, che consente di riposizionare rapidamente il set.

The T18 Led Volume Stage is a latest-generation soundstage where films are shot on a virtual and dynamic set.

The LED Volume was built by Faber Audiovisuals, using ROE BP2V2 panels (0,11" pitch) for the walls and ROE CB5 panels for the motorized roof (22.7" pitch). The LED Volume is also equipped with a **360°** rotating **82 ft diameter** platform, which quickly repositions the set.



ENEA
Pietro Castellitto
Pietro Castellitto Giorgio Quarzo Guarascio Benedetta Porcaroli



ENEA
Pietro Castellitto
Pietro Castellitto Giorgio Quarzo Guarascio Benedetta Porcaroli



WITHOUT BLOOD
Angelina Jolie
Salma Hayek Demián Bichir



TEATRI/STAGES

+ 2000 m² / +20,000 ft²

CINECITTÀ



TEATRO
STAGE

5





TEATRO STAGE

5



Area 2.873,04 m² | 30,925 ft²

H 14,05 m | 46.09 ft



Botole/Trapdoors



Insonorizzazione/Soundproofing



Climatizzazione/HVAC



Corrente/Electricity



Antincendio/Fire System



Connessione/WiFi-Lan Connection

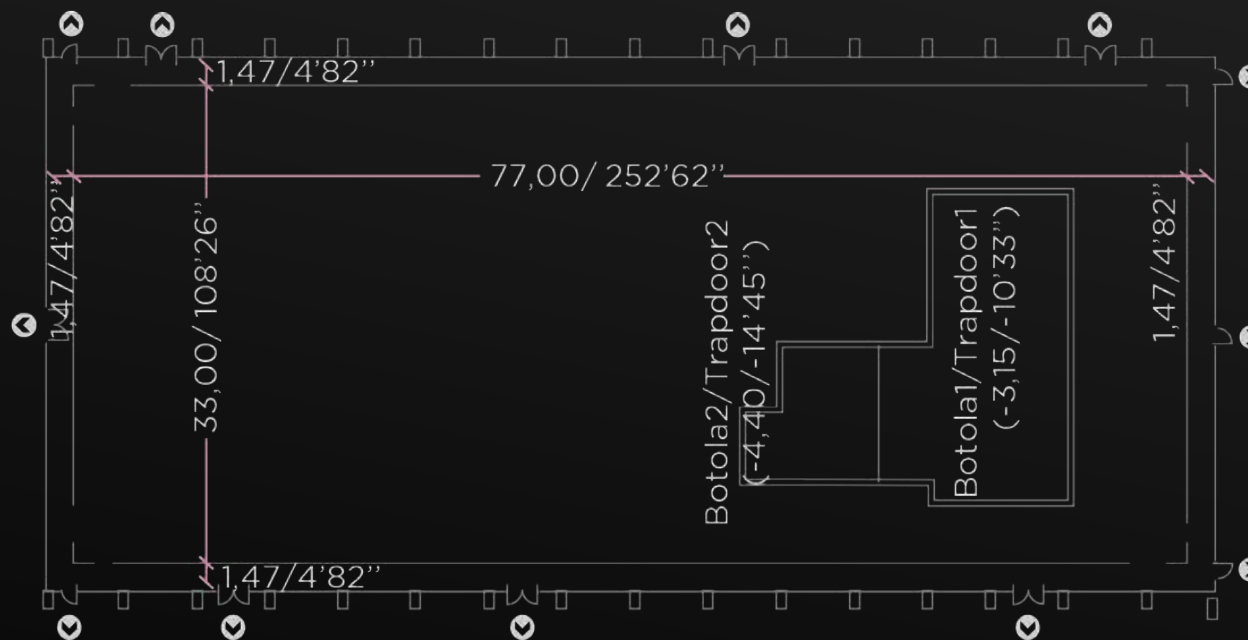


Pubblico (CPI)/Bystanders

EXTRA

6 Large offices, 4 Dressing rooms with bathroom, 1 Makeup room, 1 Shower room

2 Large workshops



DOWNLOAD PDF



FINALMENTE L'ALBA
Saverio Costanzo
Lily James Rebecca Antonaci Joe Keery Rachel Sennott Alba Rohrwacher Willem Dafoe



THE YOUNG POPE
Paolo Sorrentino
Jude Law Diane Keaton Silvio Orlando

2026

M
A
P



Cinecittà nel 2026 avrà 25 teatri attivi,
con un incremento del 60% della produttività

By 2026 Cinecittà will count 25 active soundstages,
with a 60% increase in productivity

+60%

**TEATRI NUOVI
NEW STAGES**

T22
3.650 m²
39,288.27 ft²

T23
1.850 m²
19,913.23 ft²

T24
1.850 m²
19,913.23 ft²

T25
3.650 m²
39,288.27 ft²

T26
1.150 m²
12,378.5 ft²

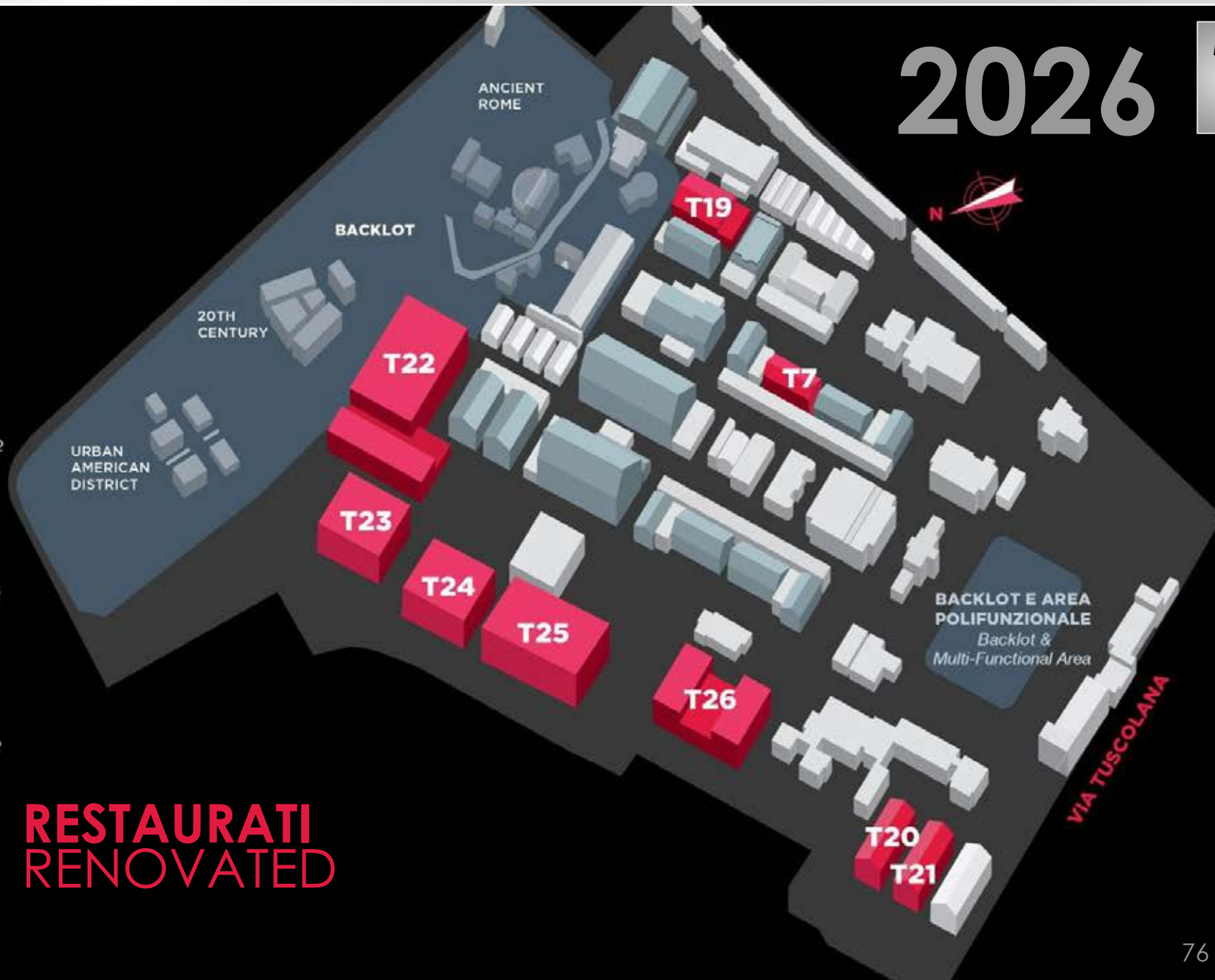
T19
870 m²
9,364.6 ft²

T7
800 m²
8,611.13 ft²

T20
850 m²
9,149.32 ft²

T21
850 m²
9,149.32 ft²

**RESTAURATI
RENOVATED**





LUMINA STUDIOS

Cinecittà gestisce i Lumina Studios, situati nella splendida cornice naturale del Parco di Veio, zona **Roma Nord**, a soli 3 km dall'**uscita Flaminia del GRA**, in Via Macherio, 228/230, CAP 00188.

Una moderna factory composta da **4 teatri di posa** per un totale di **3.014 mq**, un **backlot di 6.000 mq** e diverse aree parcheggio. I teatri sono climatizzati, insonorizzati e dotati di servizi e locali accessori.

Cinecittà manages Lumina Studios, located in the marvelous natural setting of the Veio Park (**Northern Rome** area) and strategically positioned in the transport network. Cinecittà@Lumina is a modern Studio with **4 soundstages** for a total of **32,391 square feet**, a **64,583 square feet backlot**, and several parking lots. The stages are air-conditioned, soundproof, and equipped with services, additional venues, and production venues (base camps).



LUMINA STUDIOS

T1

Teatro/Stage

Area 840 m²/9,041.68 ft²
H 9,40 m/30.84 ft

T2

Teatro/Stage

Area 570 m²/6,135.43 ft²
H 9,40 m/30.84 ft

T3

Teatro/Stage

Area 604 m²/6,501.4 ft²
H 6,70 m/21.98 ft

T4

Teatro/Stage

Area 1.000 m²/10,764 ft²
H 11,70 m/38.38 ft



Backlot

Area 6.000 m²/64,583.46 ft²

Camerini, uffici/Dressing Rooms, Offices

8 with bathroom, 3 VIP, 20 Small, 12 Medium, 5 Large

Attrezzerie e magazzini/Workshops & Warehouses

5 Medium workshops, 2 Large workshops, 1 Large warehouse



ADAGIO
Stefano Sollima
Pierfrancesco Favino Toni Servillo Valerio Mastandrea Adriano Giannini



BACKLOT

8 ettari / 8 hectares

CINECITTÀ



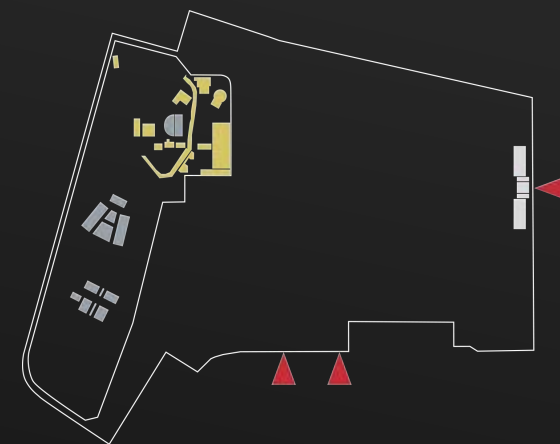
Ancient Rome



Antica Roma Ancient Rome



4 ettari | 4 hectares



Ancient Rome is the largest permanent set at Cinecittà Studios, measuring approximately 4 hectares. The buildings reproduce a classical urban cluster of religious and civilian buildings of the Roman Forum and suburbs. The supporting structure is covered with wooden frames and fiberglass decorations. In addition to its evident monumentality, the main feature of the set is its marked chromatic hues that replicate the original colors of Republican Rome in an extraordinary and evocative journey through time.

Roma Antica è il set permanente più grande degli studi di Cinecittà, con una superficie di circa 4 ettari. Le costruzioni rappresentano l'insieme classico dei principali edifici religiosi e civili del Foro Romano e la suburra. Le strutture portanti sono rivestite da telai in legno e decorazioni in vetroresina. Oltre alla sua evidente monumentalità, la caratteristica principale del set è lo spiccato cromatismo che ci riporta ai colori originali della Roma Repubblicana, in uno straordinario e suggestivo viaggio nel tempo.

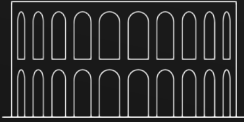


DOMINA 2
David Evans Sallie Aprahamian
Kasia Smutniak Matthew McNulty Claire Forlani Christine Bottomley Ben Batt





Roman Theater



Anfiteatro Romano

Roman Theater



800 posti | 800 seats



Roman Theater is an impressive building counting nearly 800 seats that faithfully reproduces the ancient masonry building of the Imperial Age used by the Romans for their entertainment shows. It is the ideal place for shooting films and staging performances or events.

Teatro Romano è un'imponente costruzione con circa 800 posti a sedere, che ricalca fedelmente l'antico edificio in muratura dell'età imperiale utilizzato dai Romani per i loro spettacoli di intrattenimento. Luogo ideale per riprese, rappresentazioni artistiche ed eventi.

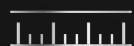


Urban American District

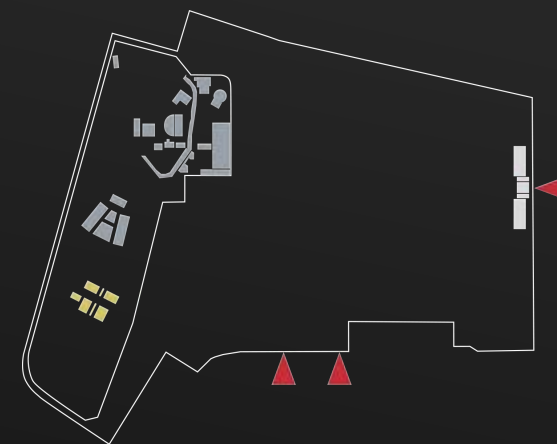


Città sudamericana

Urban American District



2 ettari | 2 hectares

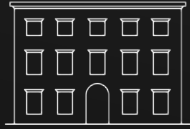


Urban American District is a dynamic space reproducing typical buildings and the architecture of a large South American city. A fascinating film set featuring **streets, shops, green areas, and multi-floor buildings** where each construction reproduces authentic regional cultures and cities in detail, from the elegance of the colonial style to the modernity of contemporary architecture.

Urban American District è uno spazio dinamico in cui sono riprodotti edifici e architetture caratteristiche di una grande città sudamericana. **Strade, negozi, aree verdi, palazzi a più piani** compongono questo affascinante set cinematografico. Ogni costruzione riflette in modo dettagliato e con autenticità le diverse culture urbane della regione, spaziando dall'eleganza dello stile coloniale alla modernità dell'architettura contemporanea.



20th Century



Città italiana - Inizio del ventesimo secolo

20th Century



2 ettari | 2 hectares



20th Century is a set that accurately recreates the spaces and places of an early 20th-century Italian city mingling middle-class and popular neighborhoods. The area faithfully reproduces **residential buildings, mansions and suburbs, a church, commercial streets, and a tramway depot**. Each architectural element was created skillfully and with great attention to detail to reflect the elegance and charm of the time.

20th Century è il set che ricrea in modo accurato gli spazi e i luoghi di una città italiana dell'inizio del ventesimo secolo combinando quartieri borghesi e popolari. Questo ambiente è una fedele riproduzione che comprende **edifici civili, palazzi signorili e sobborghi, una chiesa, strade commerciali e una rimessa tranviaria**. Ogni elemento architettonico è stato realizzato con maestria e cura nei dettagli riflettendo l'eleganza e il fascino dell'epoca.

CINECITTÀ

cinecitta.com