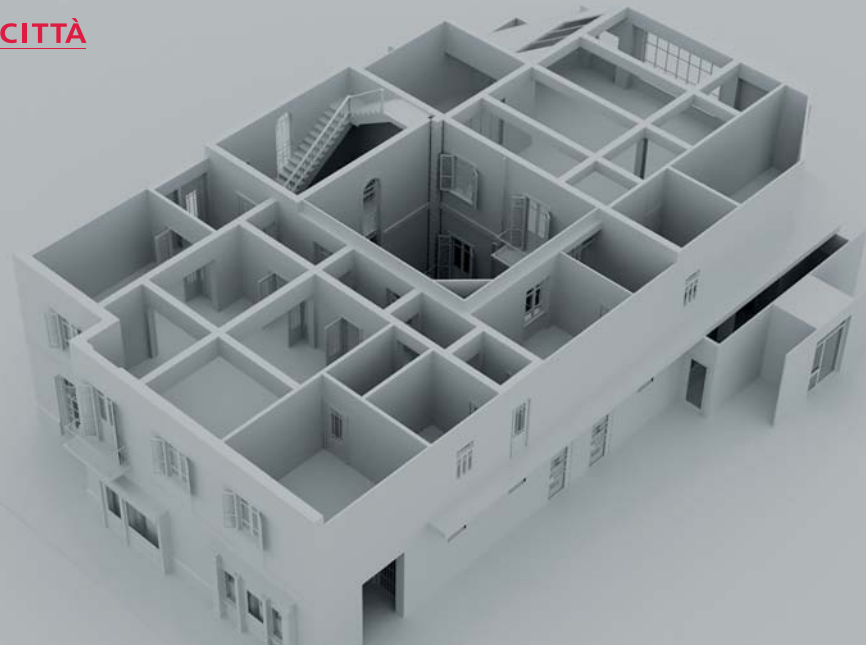




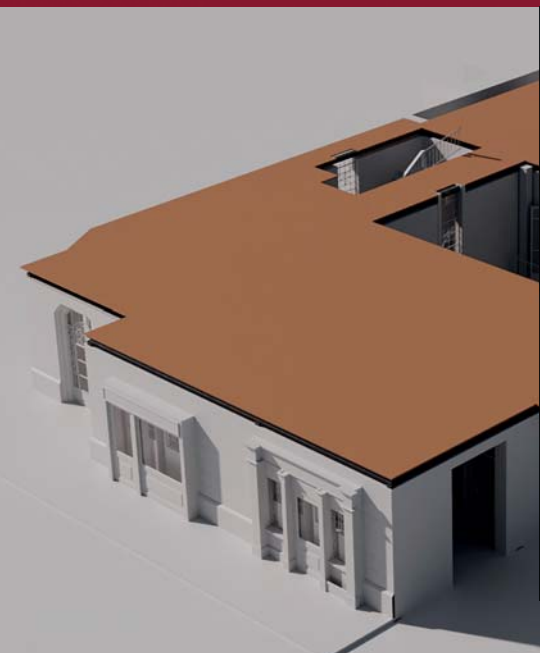
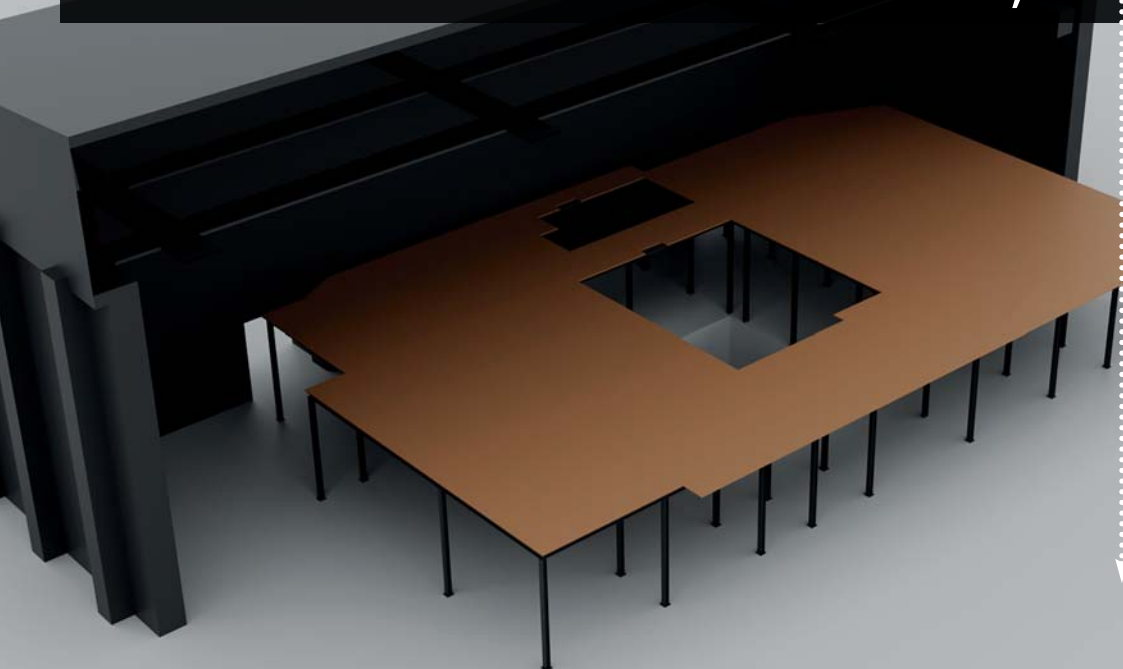
CINECITTÀ
RESIDENTIAL SET

5 LARGE READY-TO-USE SETS
WITHIN A SINGLE STAGE



**A MULTIFUNCTIONAL AND
MODULAR **PRET-A-PORTER SET,****

designed to satisfy boundless needs in limited times and costs. Five sets in one: an apartment building, a hospital, a prison, as well as indoor and outdoor urban commodity spaces — a guarantee of economic, productive, logistical, operational, and eco-sustainable efficiency.



- EFFICIENT
- ADAPTABLE
- INNOVATIVE
- GREEN

UPPER FLOOR / LEVEL + 4,00

LANDING

MODERN APARTMENT

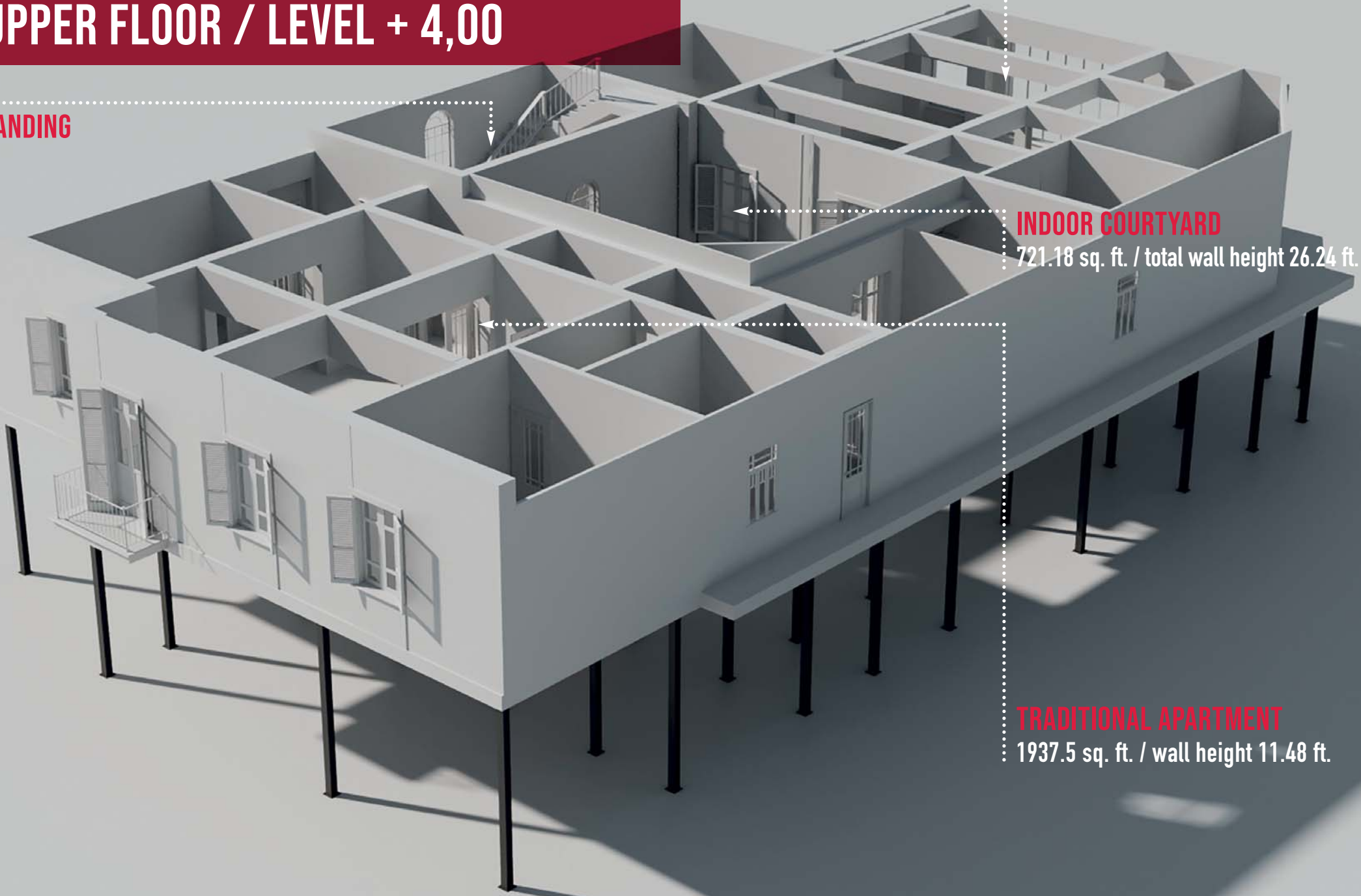
1614.59 sq. ft. / wall height 13.12 ft.

INDOOR COURTYARD

721.18 sq. ft. / total wall height 26.24 ft.

TRADITIONAL APARTMENT

1937.5 sq. ft. / wall height 11.48 ft.





- 1937.5 sq. ft.
- Wall height 11.48 ft.



• **TRADITIONAL APARTMENT**

The traditional apartment includes two bedrooms, two bathrooms, a large 645.83 sq. ft. living room, a 226.04 sq. ft. kitchen, and a long hallway that begins and ends with two translucent doors. The hallway windows, a bedroom, and a bathroom made from a walkway overlook the indoor courtyard of the building.



- 1614.59 sq. ft.
- Wall height 13.12 ft.



• MODERN APARTMENT

The modern apartment features large open spaces. Beyond the entrance is a large 1291.67 sq. ft. open-space lounge with an open-plan kitchen. The sizable windows and a lowered ceiling area make it easy for this space to become a loft. A bedroom and a bathroom complete the apartment.

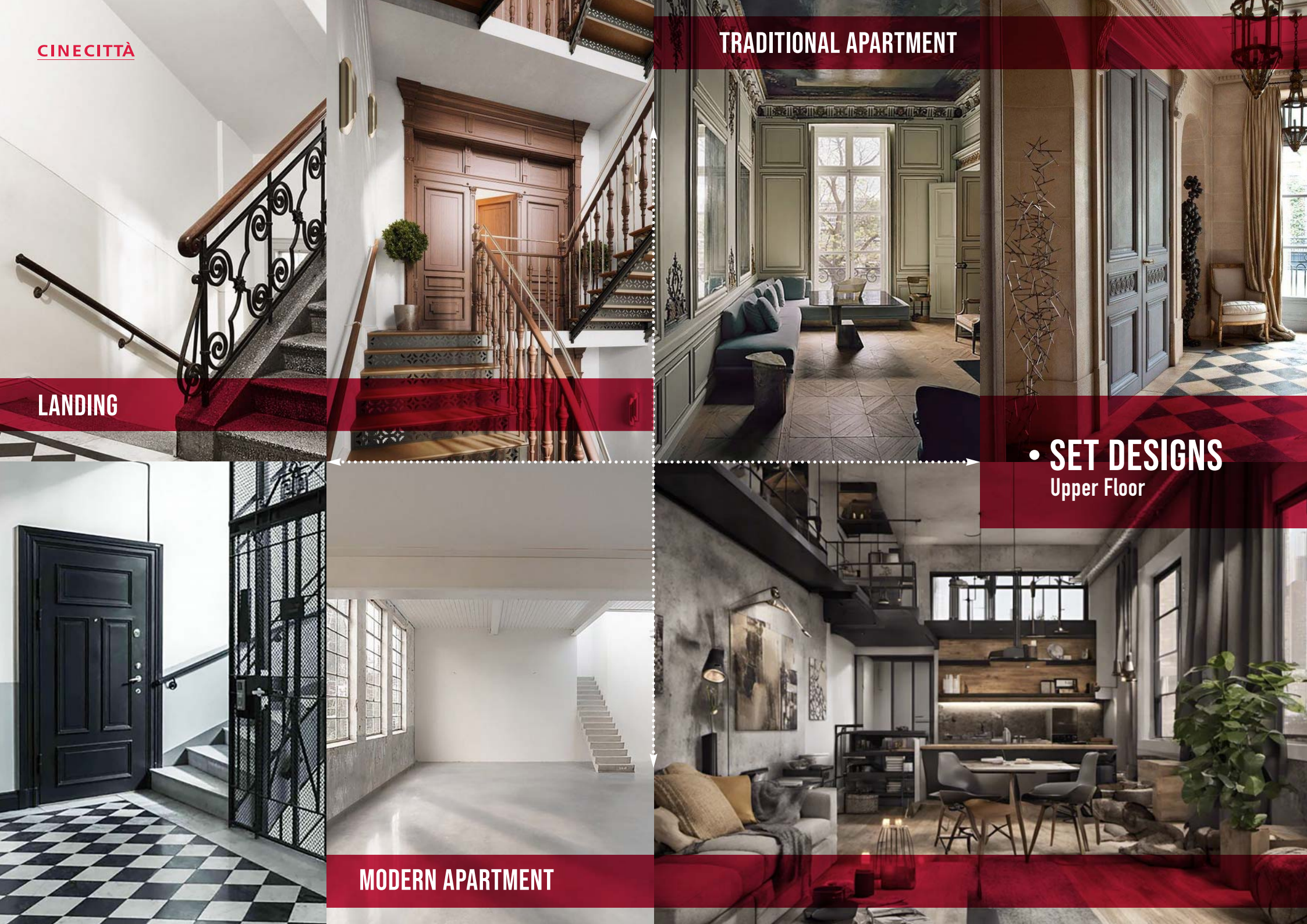
CINECITTÀ

TRADITIONAL APARTMENT

LANDING

• SET DESIGNS
Upper Floor

MODERN APARTMENT



LOWER FLOOR / LEVEL +0.00

ENTRANCE HALL

688.89 sq. ft. / Wall height 12.13 ft.

HOSPITAL

2626.39 sq. ft. / Wall height 12.13 ft.

PRISON

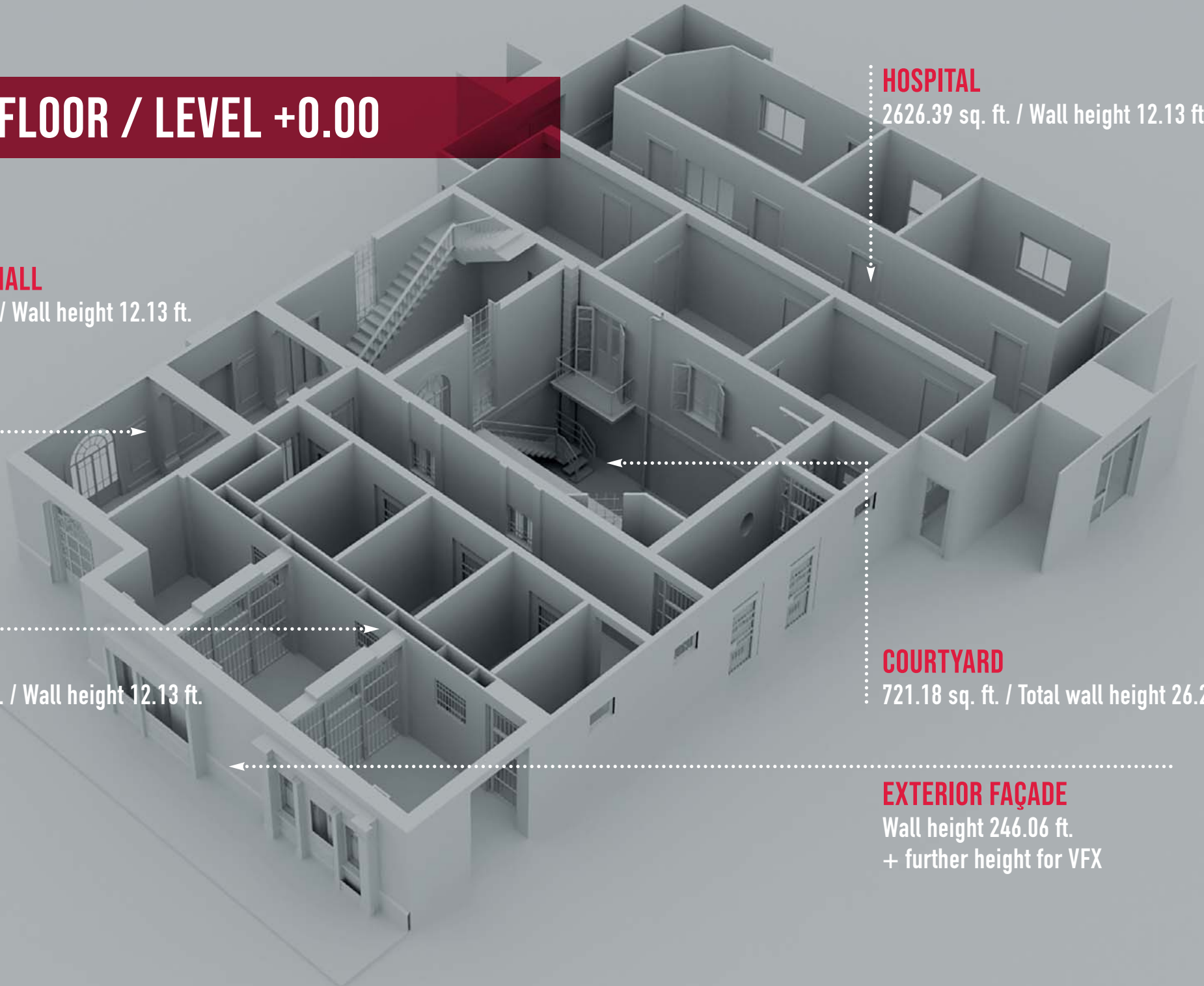
1377.78 sq. ft. / Wall height 12.13 ft.

COURTYARD

721.18 sq. ft. / Total wall height 26.24 ft.

EXTERIOR FAÇADE

Wall height 246.06 ft.
+ further height for VFX





- 688.89 sq. ft.
- Wall height 12.13 ft.



• ENTRANCE HALL

Through an imposing iron door, the outdoor street leads to a traditional-style entrance hall outfitted with a concierge, backlit windows, a stairwell, and an exit door that leads to the indoor courtyard. Two large, decorated windows that reach the upper floor embellish the stairwell.



- 1377.78 sq. ft.
- Wall height 12.13 ft.

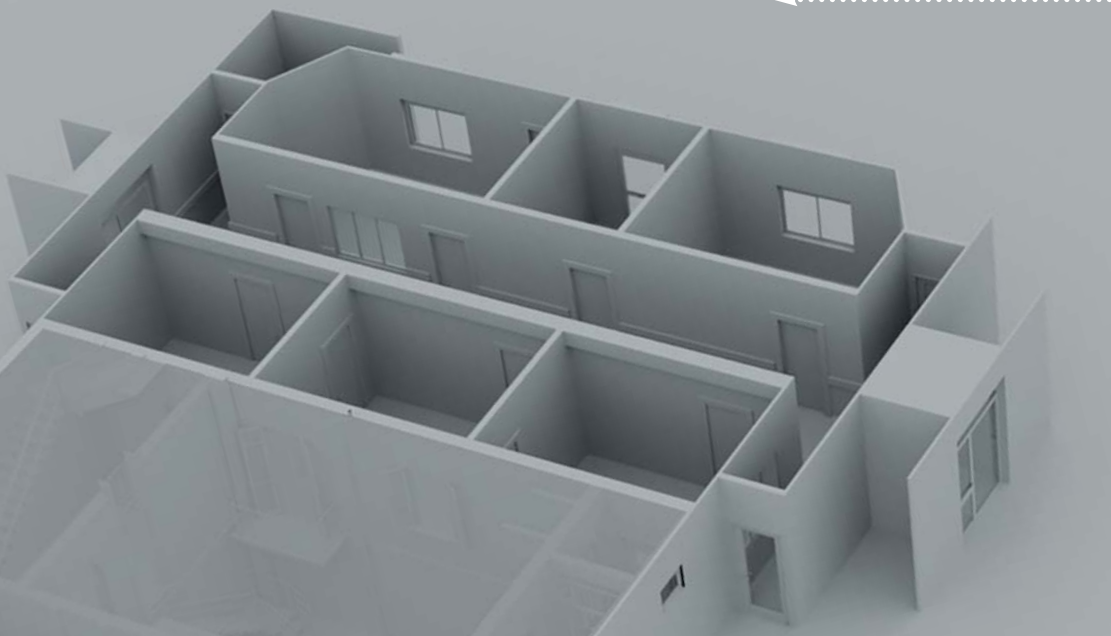


• PRISON

The prison consists of three hallways. The first large one features walls suitable for installing dolly tracks to be dismantled to make room for shop facades along a street when needed. The second hallway includes 4 prison cells on the left and barred windows on the right. The last hallway is the longest and alternates cell doors and high windows, ending in the interview room.



- 2626.39 sq. ft.
- Wall height 12.13 ft.



• HOSPITAL

The hospital space is divided into 5 rooms to be structured according to need, though initially designed for 2 rooms, an operating room, a foyer, and a doctor's room. The hallway begins and ends with two entrance doors that exit the soundstage structure, which allows for the shooting of the entrance from an eventual outdoor emergency room.



- 721.18 sq. ft.
- Total wall height 26.24 ft.



• COURTYARD

The two apartments and the stairwell overlook the indoor courtyard. Both the prison and the hospital are externally finished to look like two further apartments on the ground floor. The courtyard also has an iron staircase that goes from 0 ft. to -9.84 ft.

CINECITTÀ



- Wall height 246.06 ft. + further height for VFX



• OUTDOOR FAÇADE

The upper floor façade features windows and a French window with a small balcony stemming from the traditional apartment, while the lower floor presents the door to the entrance hall and two large spaces that can lodge street shop windows. A sidewalk and asphalt road surface complete the road.

CINECITTÀ



ENTRANCE HALL

OUTDOOR FAÇADE



• SET DESIGNS
Lower Floor



HOSPITAL



PRISON

MODULARITY OF THE ELEMENTS

With a view to the **multifunctionality of the set**, the modules have been designed to be combined and create different arrangements and combinations. The idea comes from the natural evolution of the stage frame technique. The sizes of the modules are designed to produce the least possible waste from the processing of standard multilayer panels.

Module sizes in ft:

- 6.06 x 9.84
- 6.06 x 13.12
- 3.28 x 9.84
- 3.28 x 13.12
- 2.78 x 9.84
- 2.78 x 13.12

FLOORS

The flooring of the **lower floor** (level 0) exploits the existing stage floor treated with glossy cement resin to easily become the prison floor or the base for any other flooring finishing.

On the **upper floor** (level +4), the flooring is in wood-cement composite (multilayer wood panels), a material based on wood fiber. The wood-cement composites are free from finishing in the modern apartment and the prison ceiling, while they can be treated with any finishing in the traditional apartment and the landing.

FINISHES | DOORS AND WINDOWS

Finishes

In full compliance with the project's reuse and ecological philosophy, all modules are built to modify their finishes and decors easily.

Doors and Windows

All the walls that make up this set have been designed with compartments to lodge different types of windows.

The windows can be cased without redesigning and reconstructing the frames within the walls.

This solution allows for the fastest alteration of the architectural style.



**CINECITTÀ
RESIDENTIAL SET**

**5 LARGE READY-TO-USE SETS
WITHIN A SINGLE STAGE**